

# Hyperdrills - Creating



The screenshot shows the Oracle Discoverer interface with a 'Drill' dialog box open. The background table has the following data:

| Group Number | Group Name |
|--------------|------------|
| 1            | HARDWARE   |
| 2            | GARDENING  |
| 3            | BUILDING   |
| 4            | DECORATING |
| 5            | BATHROOM   |

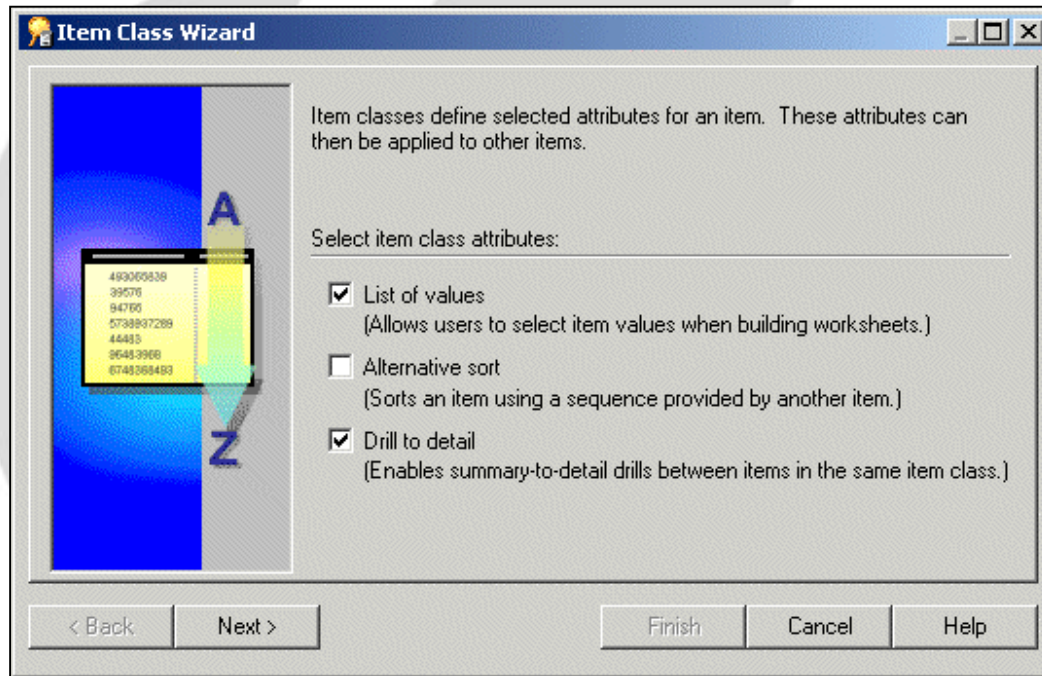
The 'Drill' dialog box contains the following fields and options:

- What type of drill do you want to do?
  - Drill Up/Down
  - Drill to a Related Item
  - Drill to Detail in another Sheet
- Where do you want to drill from?  
Group Number
- Where do you want to drill to?  
Products
- Description:  
Drill from a table column and filter by the current row values.

# Hyperdrills – Creating (Step 1)



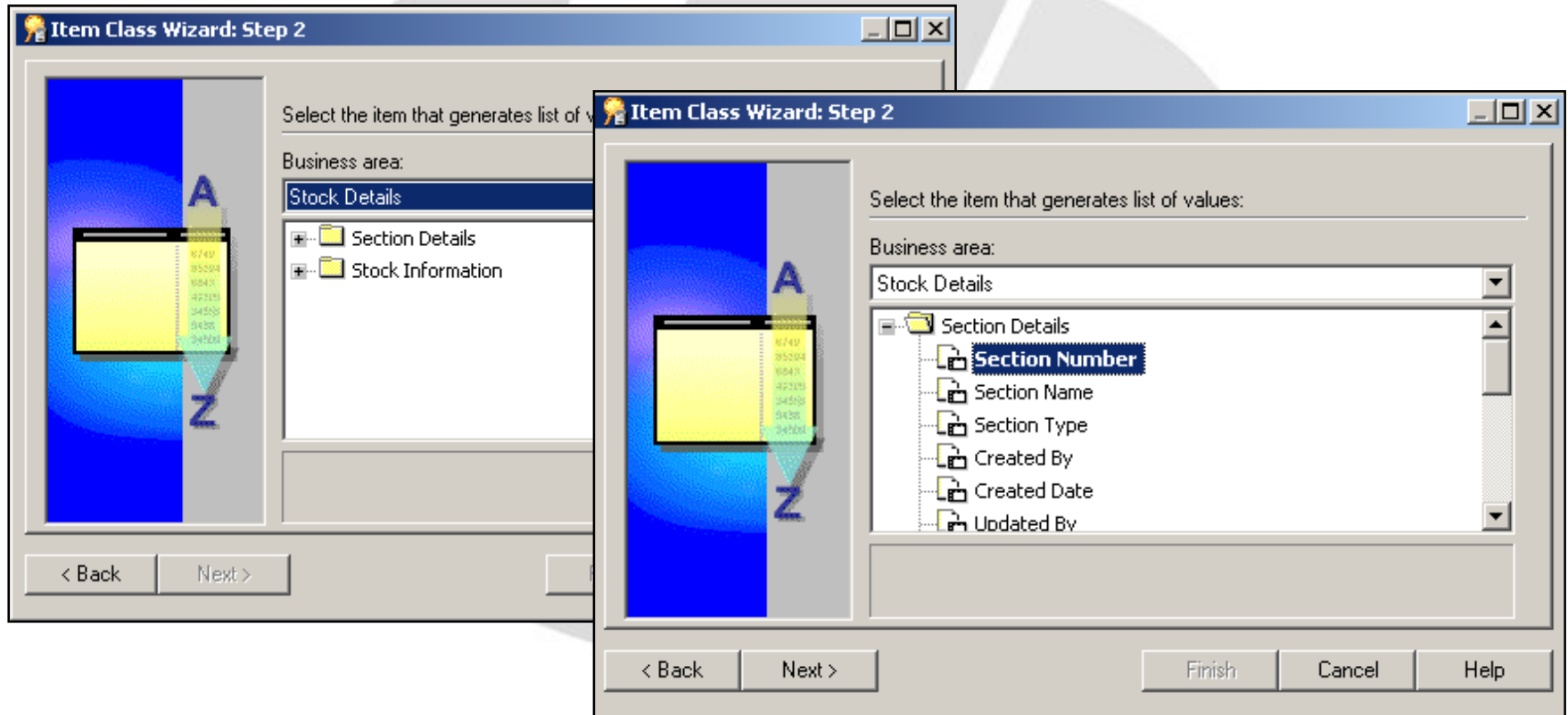
- Select Drill to Detail from the Item Classes option



# Hyperdrills - Creating (Step 2)



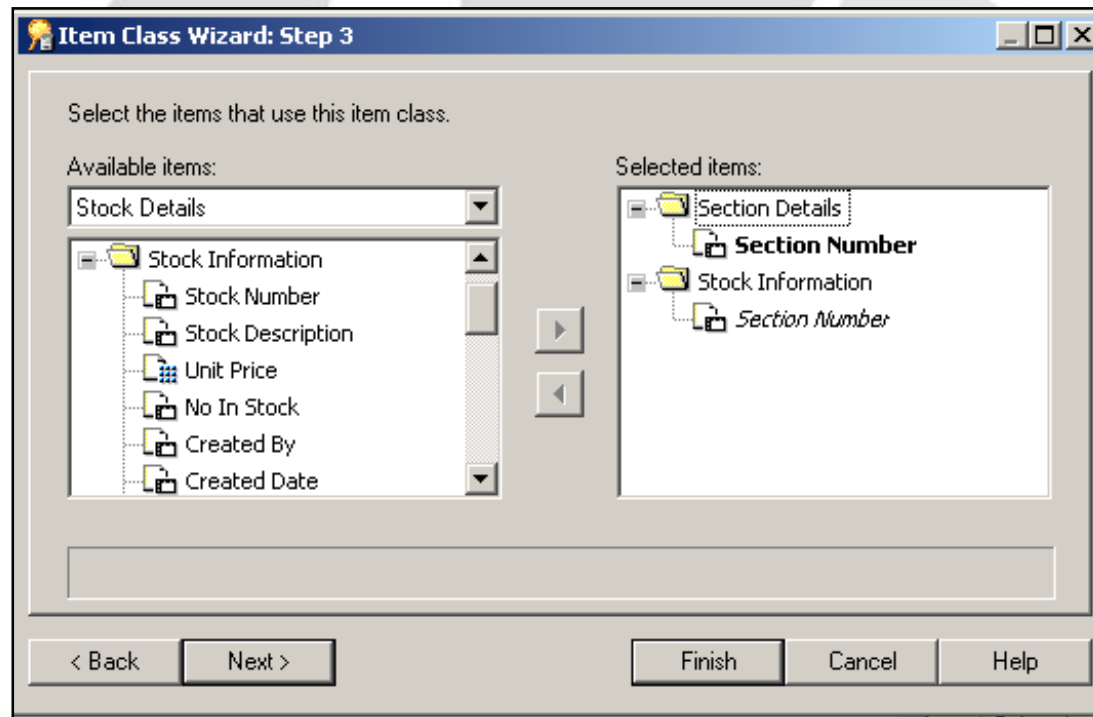
- This step selects the primary key item from the level which the hyperdrill starts...



# Hyperdrills - Creating (Step 3)



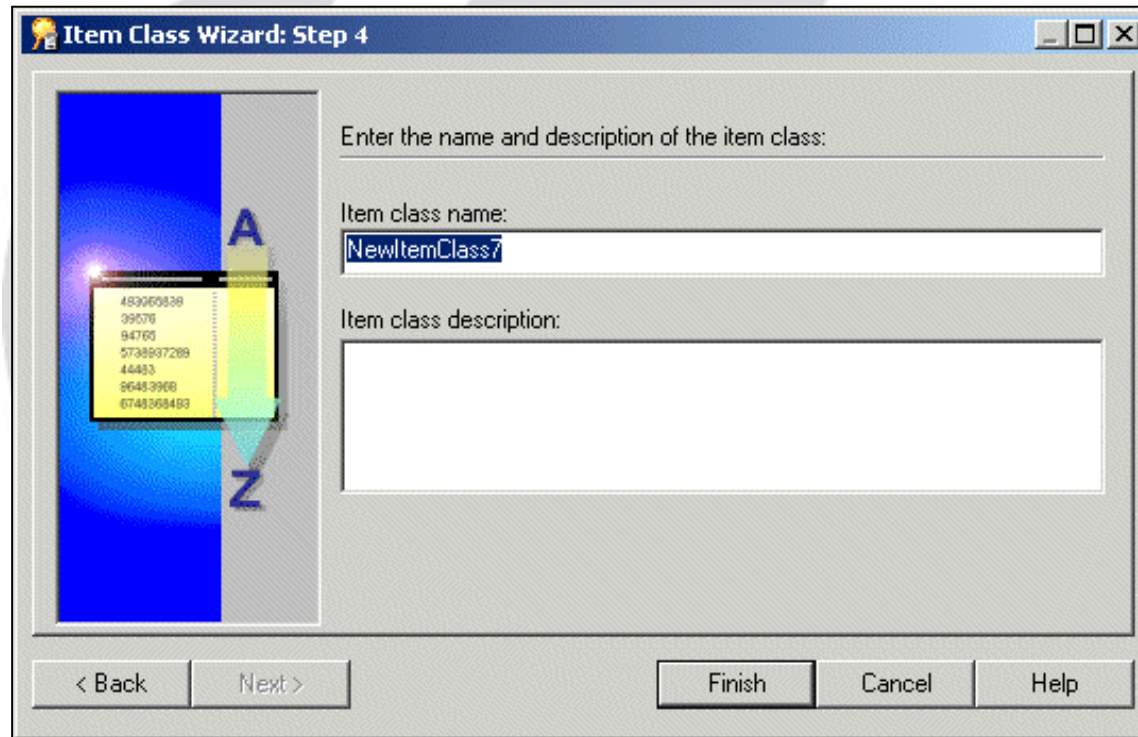
- Then the Administrator selects the foreign key item from the next level which links to the primary key item in the previous level.



# Hyperdrills - Creating (Step 4)

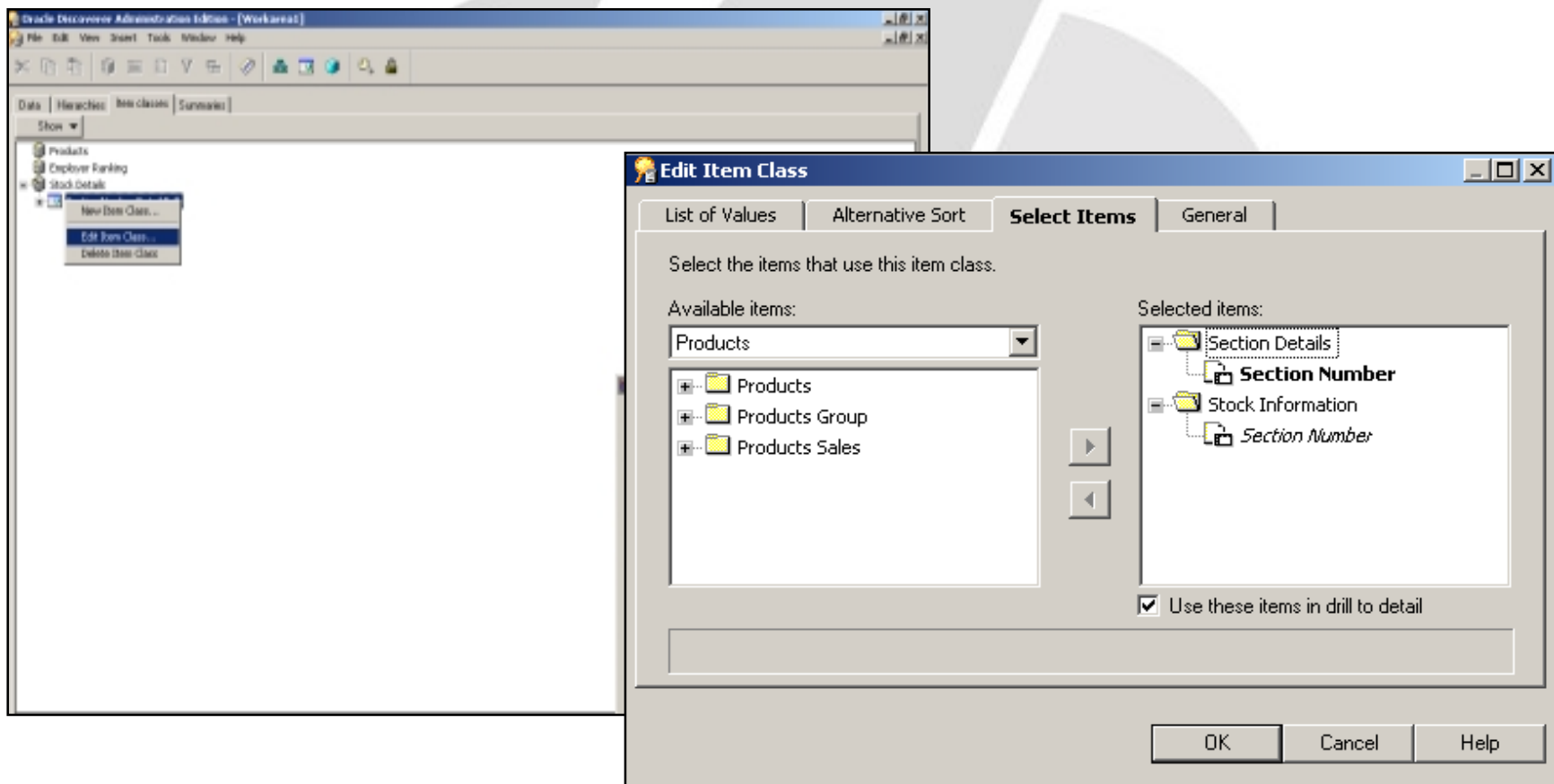


- And finally ... the Administrator can name the Drill to Detail





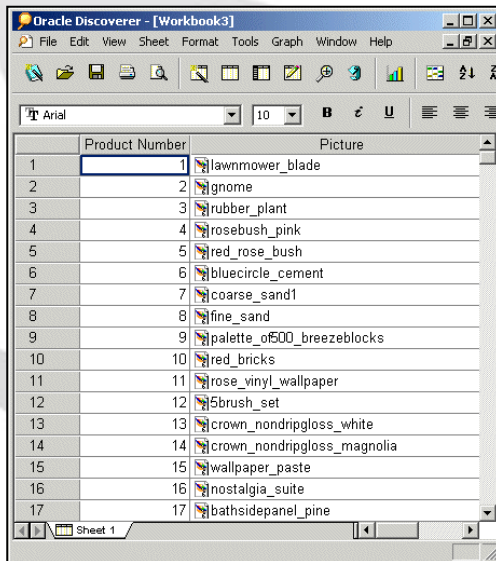
- To edit the Hyperdrill, select the Item Classes tab and right click on the Item



# Hyperdrill Plug-in - Introduction



- Discoverer Administrator provides the ability to drill from an item to an external application such as a Word document, spreadsheet, audio/video file, etc.
- An icon associated with the particular filetype will appear in the cell from which the user can drill. The application associated with the filetype will be launched when the cell is double clicked.





- Ensure that there is a column in the database that contains the path and filename of the file that is to be opened when the user double clicks the cell in the user edition.
- Make sure the content type is set to FILE ...

