

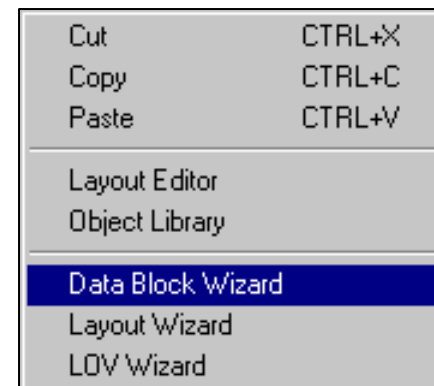
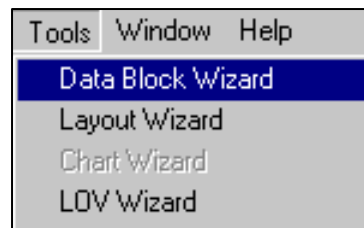
Forms 6i Wizards - Data Block Wizard in Forms 6i



The Data Block Wizard is used to create or modify data blocks based on Database Objects such as tables, views or procedures.

To use the Data Block wizard either ...

- Select Data Block Wizard from the Tools menu *or*
- Right click inside the Object Navigator pane and select Data Block Wizard from the menu *or*

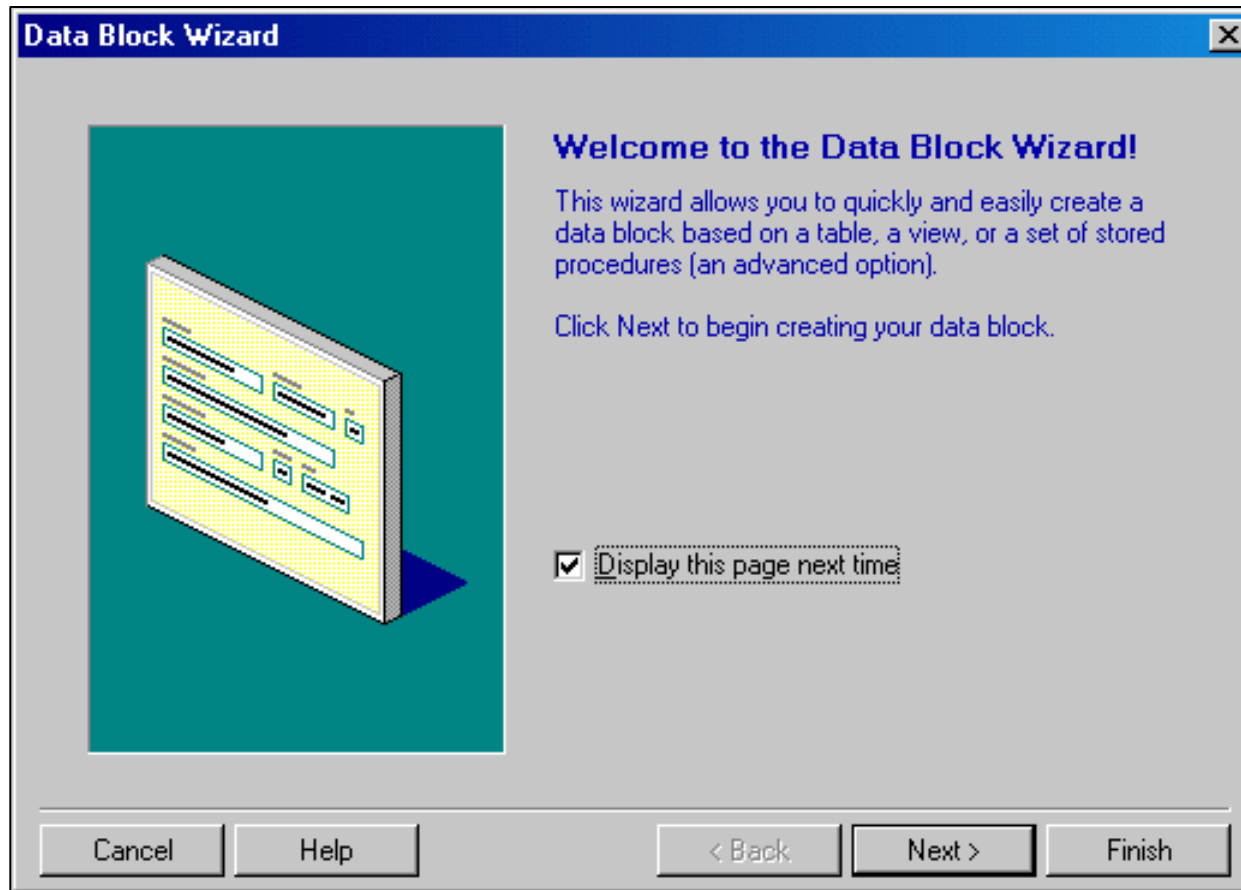


- Select the 'Use Data Block Wizard' option from the Welcome Screen

Forms 6i Wizards - Data Block Wizard in Forms 6i



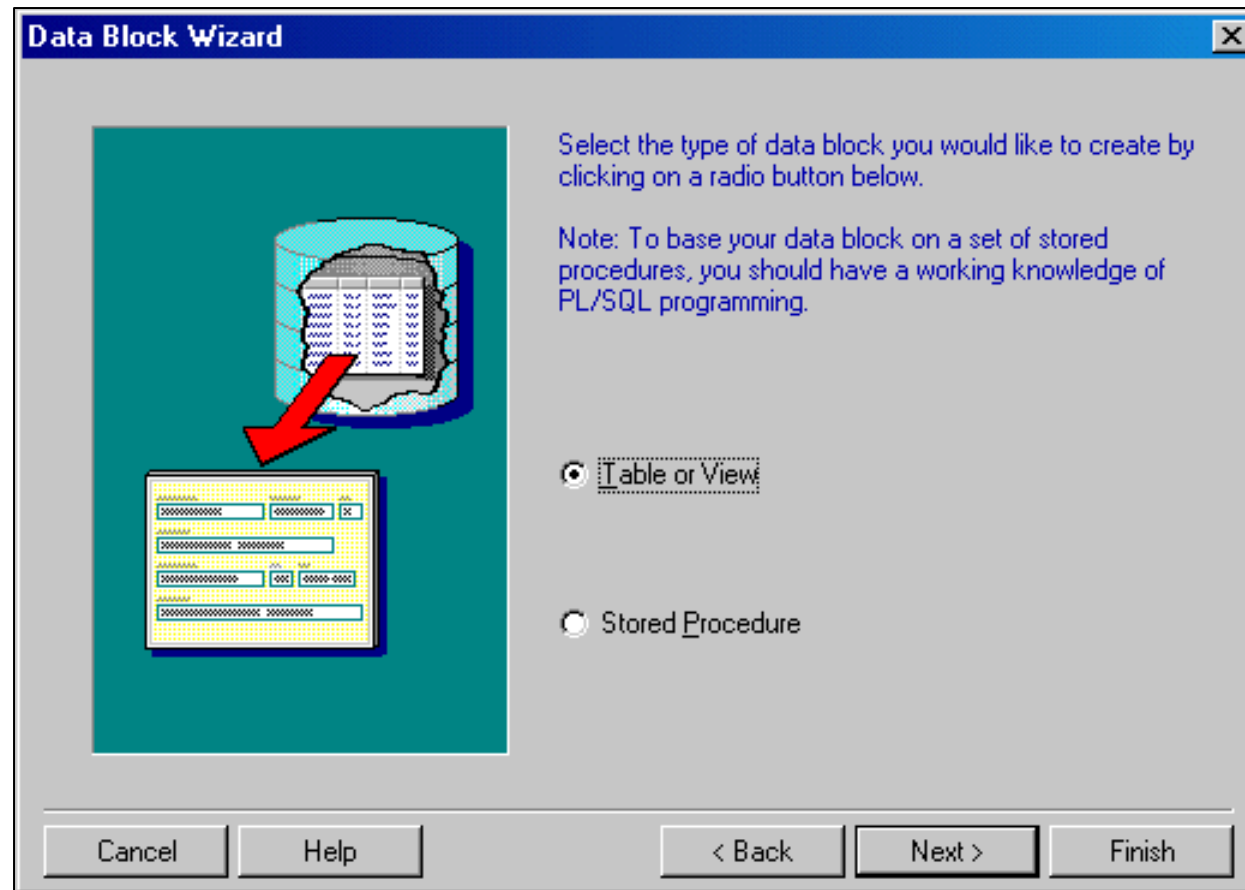
The Data Block Wizard Welcome screen is displayed when the wizard is first activated... this can be suppressed ...



Forms 6i Wizards - Data Block Wizard in Forms 6i



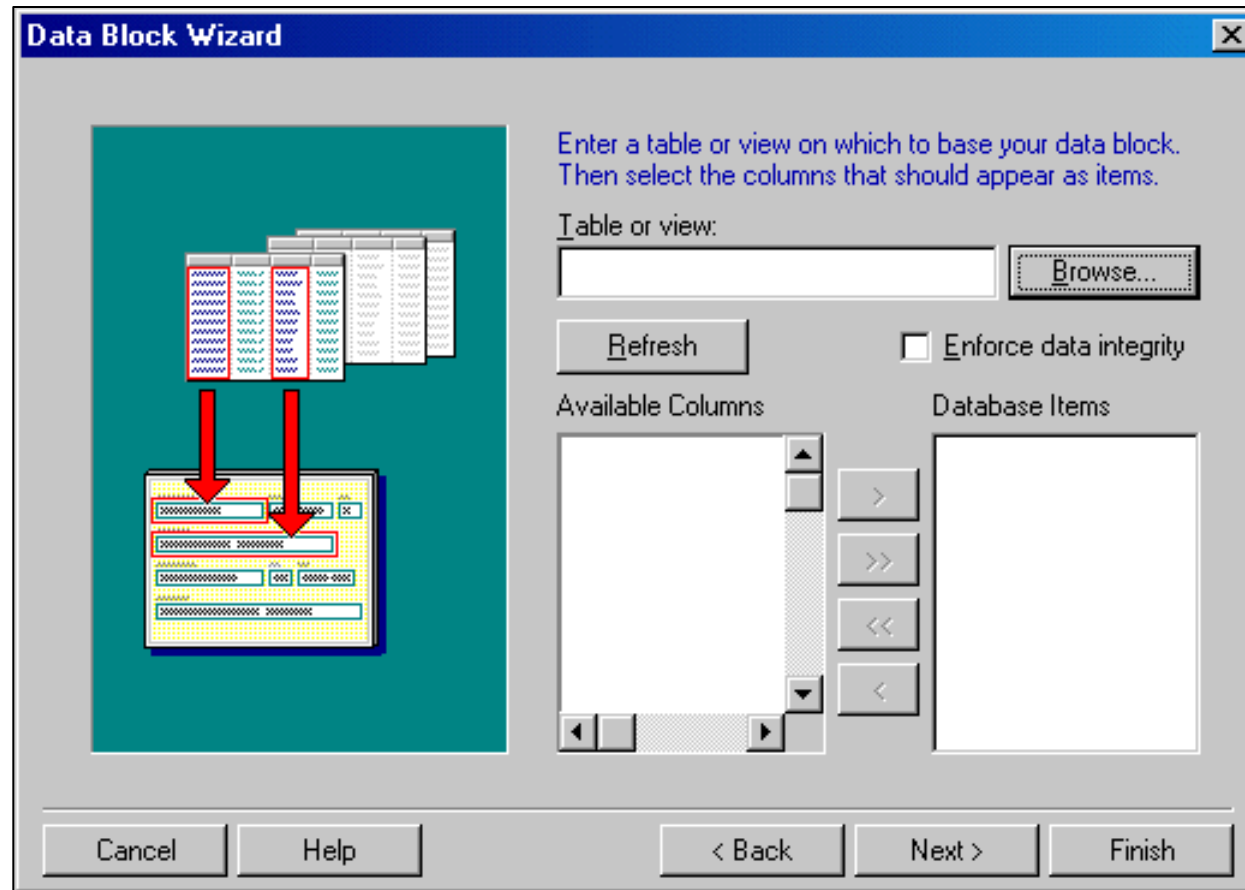
The Data Block can be based on either a Table or a Procedure, either of which can supply data to the Form.



Forms 6i Wizards - Data Block Wizard in Forms 6i



Selecting Table or View as the basis for the data block will display the following steps in the wizard...

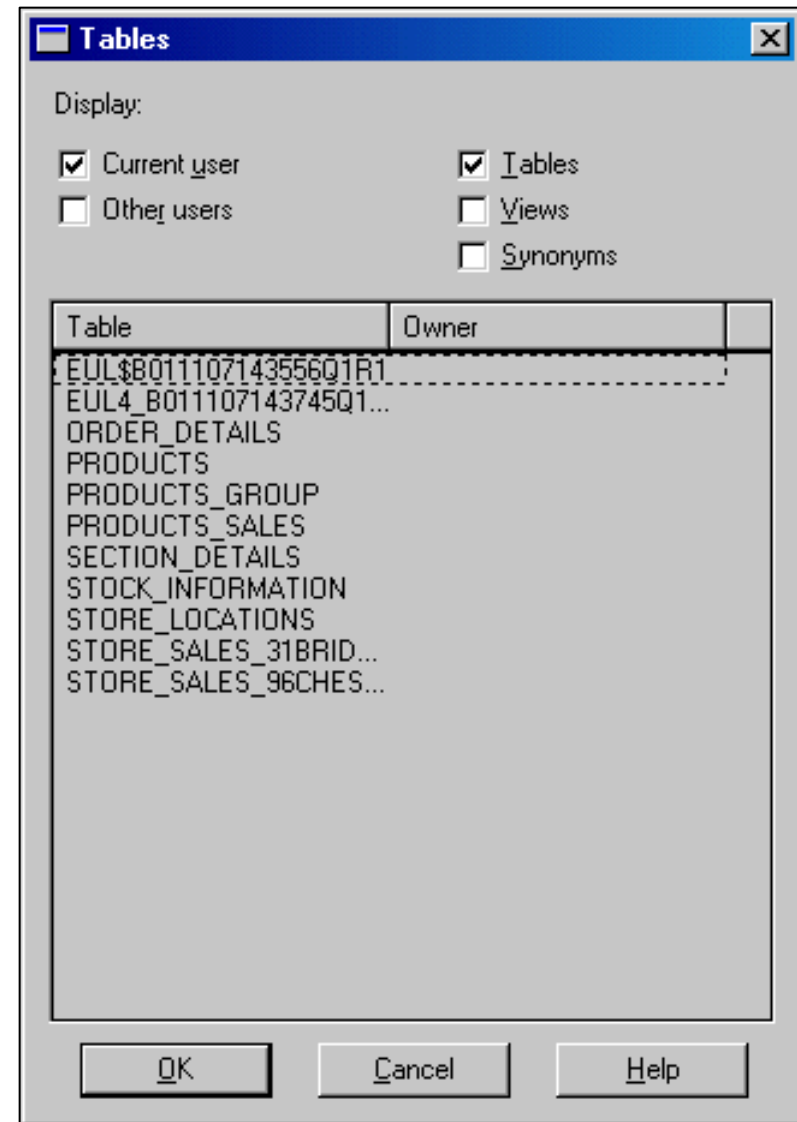


Forms 6i Wizards - Data Block Wizard in Forms 6i



Clicking Browse will display the following dialog from which tables and views can be added.

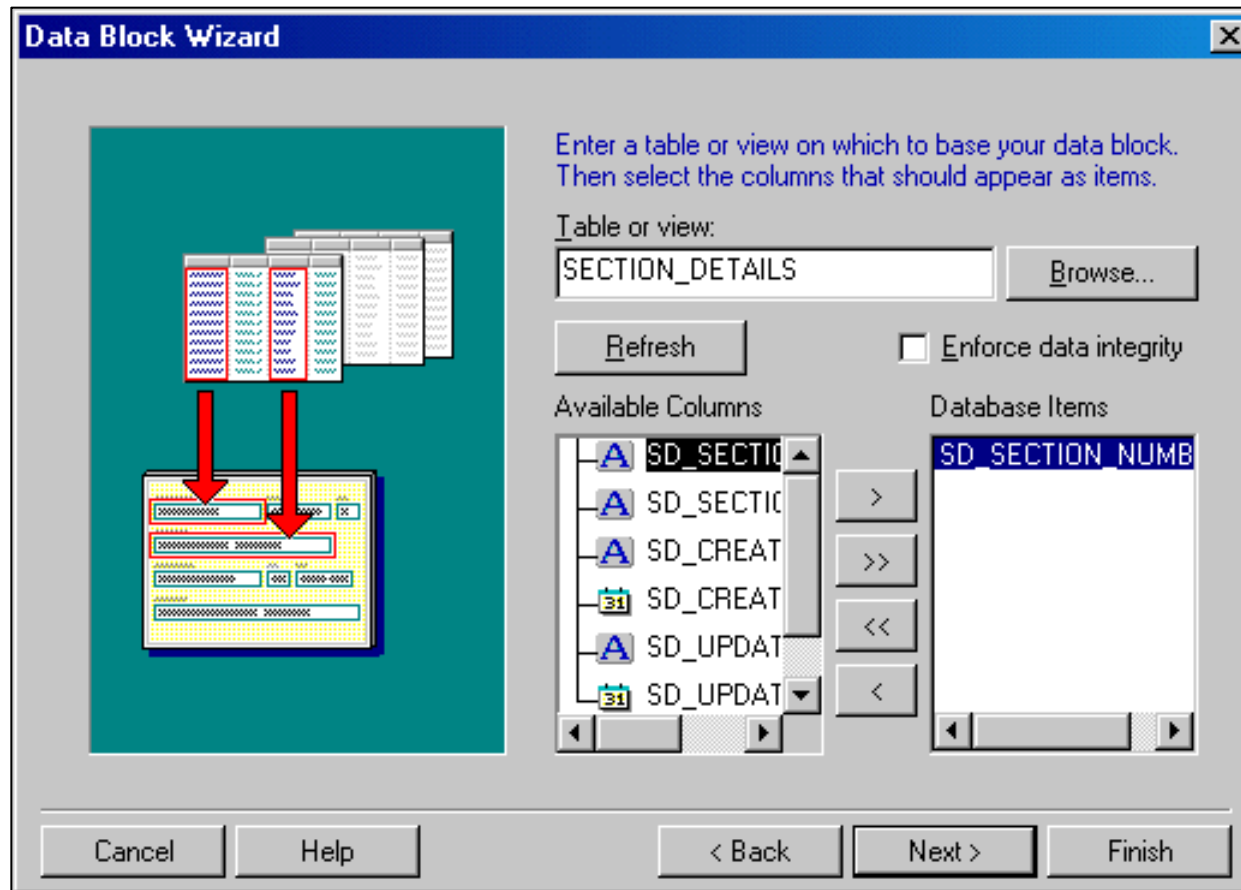
If the Developer is not connected to the database, the login box will be displayed before the list of tables and views can be shown.



Forms 6i Wizards - Data Block Wizard in Forms 6i



Clicking OK will show the name of the table/view and list the columns associated with it...





Forms 6i Wizards - Data Block Wizard in Forms 6i

This is the final dialog box for the Data Block Wizard, in most instances the Developer will choose to move straight onto the Layout Wizard ...

