



Query Builder is an entirely separate Oracle product, however within Reports 10g, Oracle has created a cutdown version for selecting data only, basically it allows the Developer to grab tables and their columns, apply functions to them and when complete return to Reports 10g with the SQL query built.

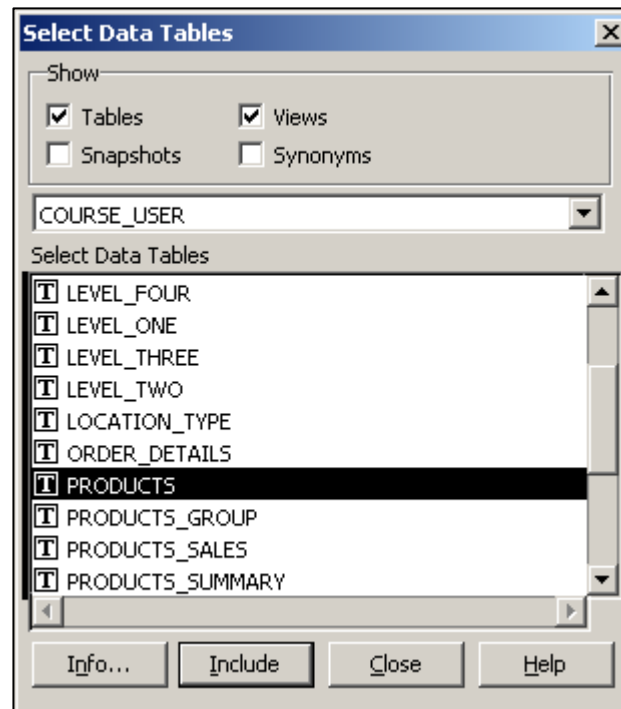
Using Query Builder to its fullest extent is a course in itself, however, the following slide outline the main functionality of the product with reference to its usage in Reports 10g.

Before Query Builder will begin, if the Developer is not already connected it will prompt them to connect. One other point, if there is SQL already written in the Data Source Definition and is in error then Query Builder will repeat that error message when it opens.

# Report Wizard - Query Builder in Data Source Definition



Query Builder will display a list of all tables/views available for the Developer to select from the current schema

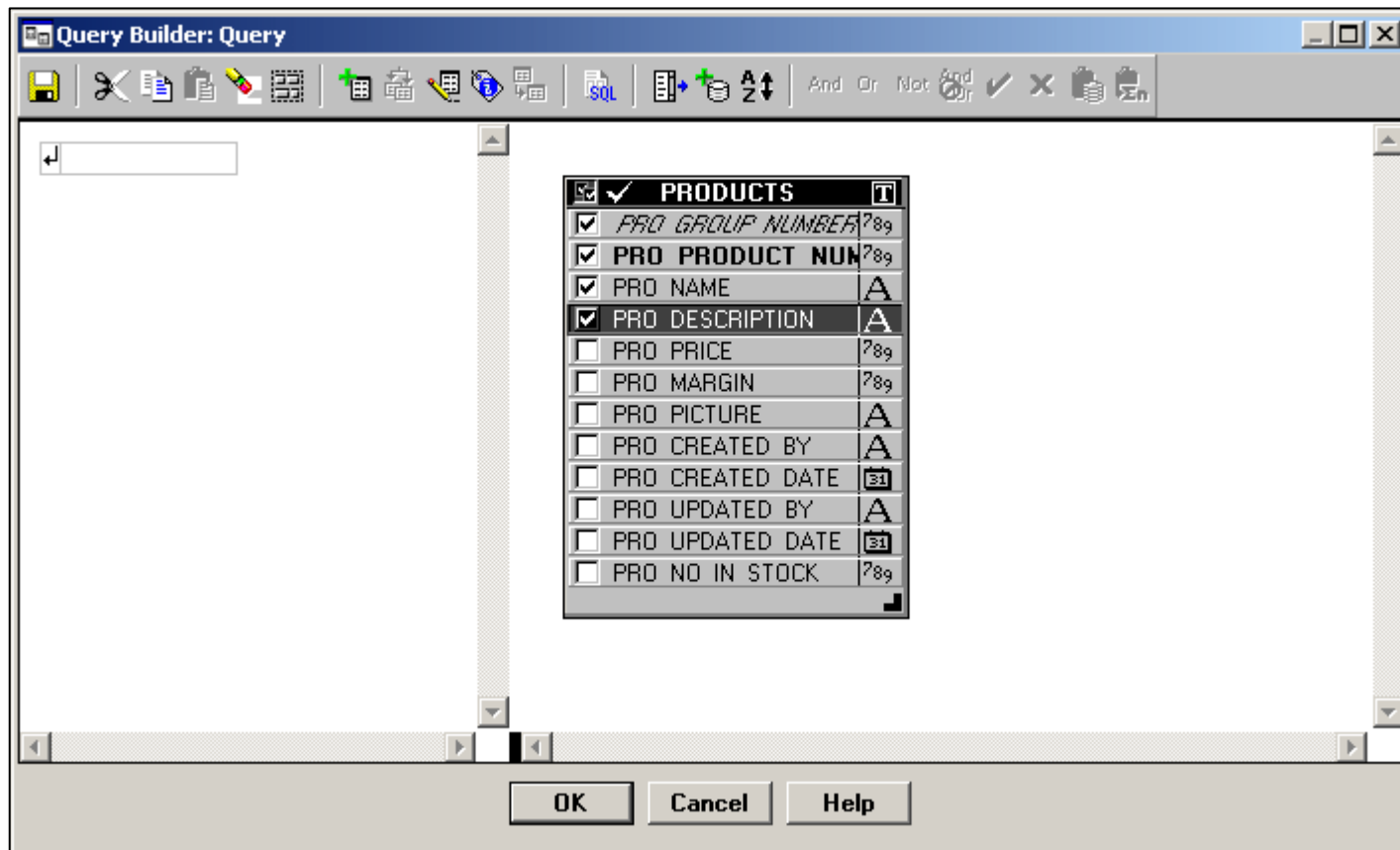


This dialog will not close automatically and each table included will be entered into the dialog behind it ....

# Report Wizard - Query Builder in Data Source Definition



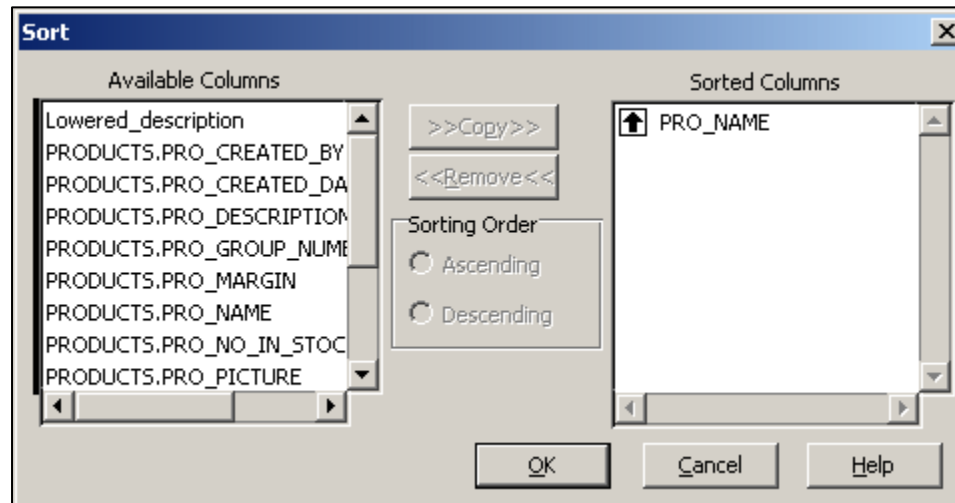
Here the Developer has selected the Products table and has clicked on several columns to select them ...



# Report Wizard - Query Builder in Data Source Definition



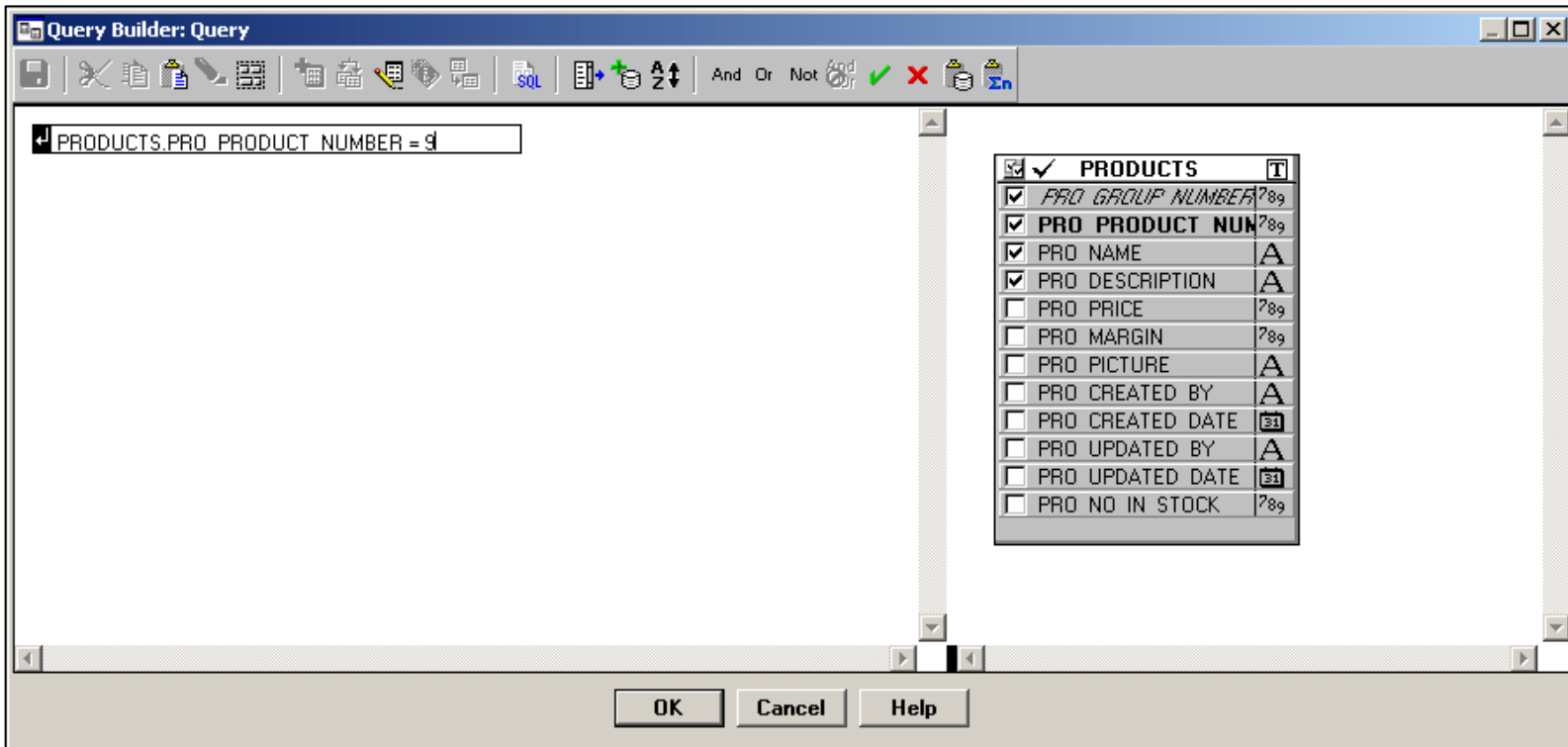
To create an Order By clause the Developer must click on the ninth button from the right which displays the columns which are available for sorting ...



# Report Wizard - Query Builder in Data Source Definition



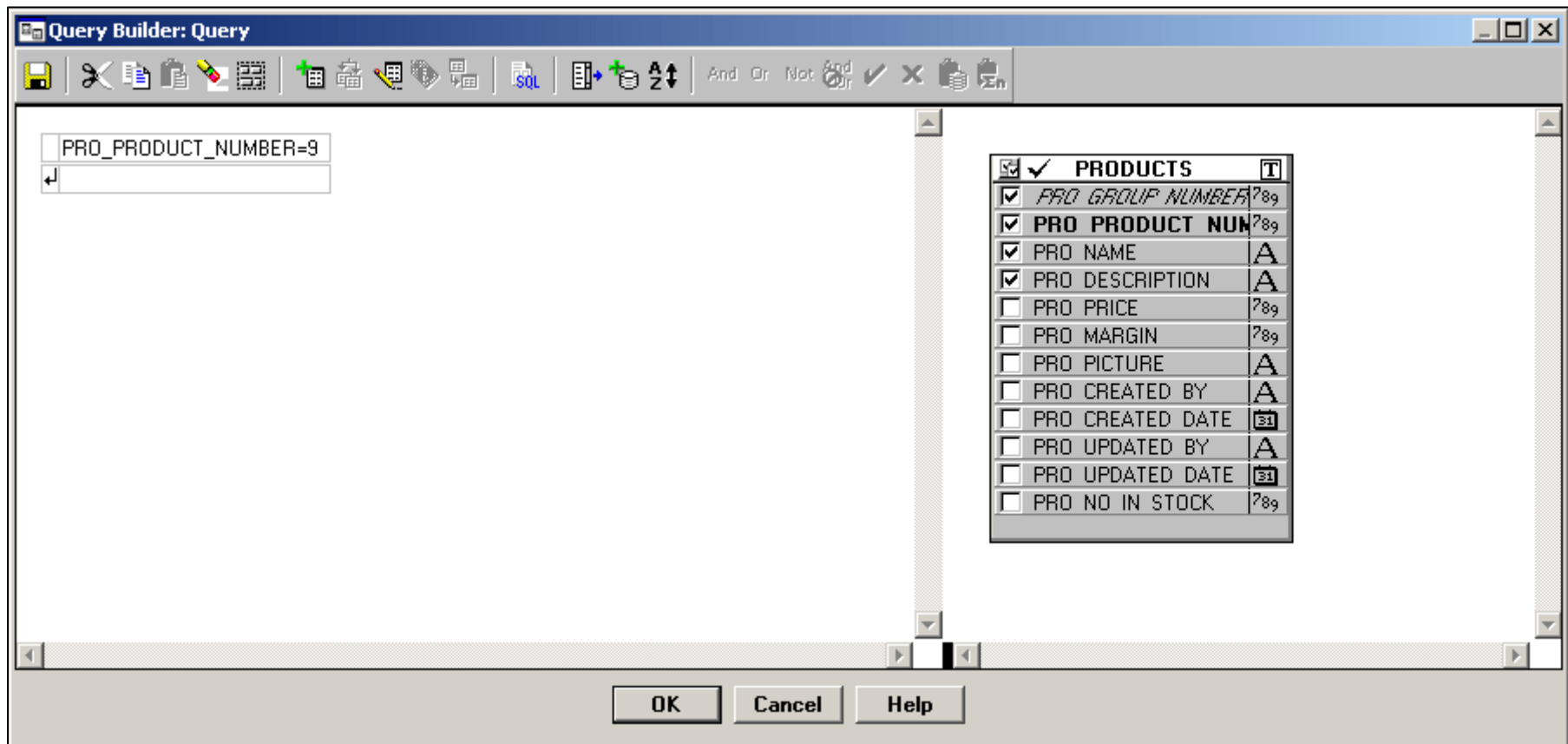
To create a condition, click on the left hand panel, then either manually enter the condition or double click on the required column and enter the condition needed, here the Developer is limiting records with a Product Number of 9.



# Report Wizard - Query Builder in Data Source Definition



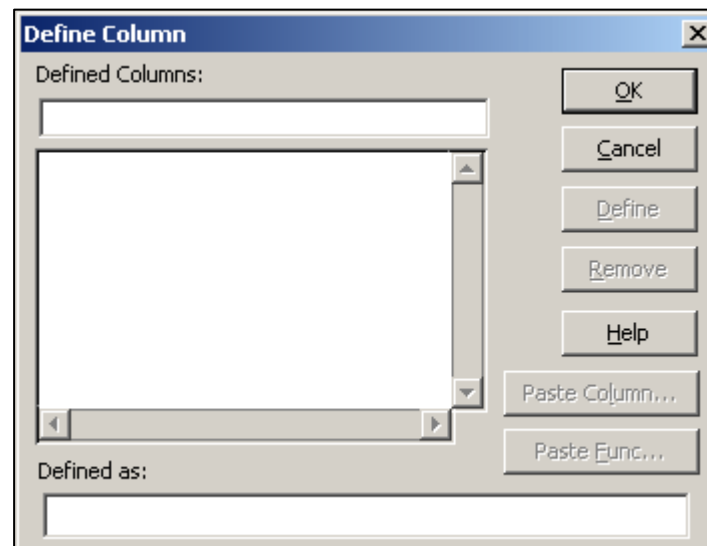
Clicking on the green tick button will accept and check the condition, if it is correct then a second input line will appear ...



# Report Wizard - Query Builder in Data Source Definition



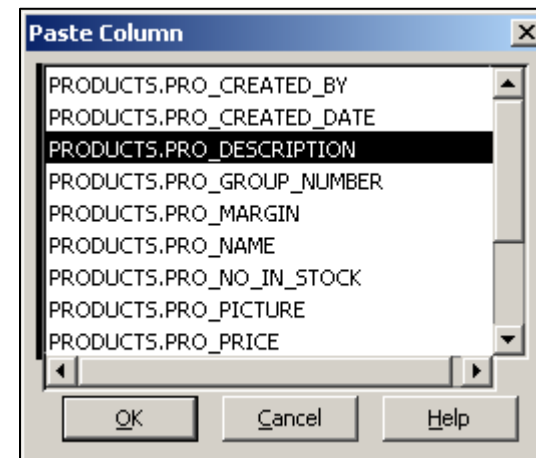
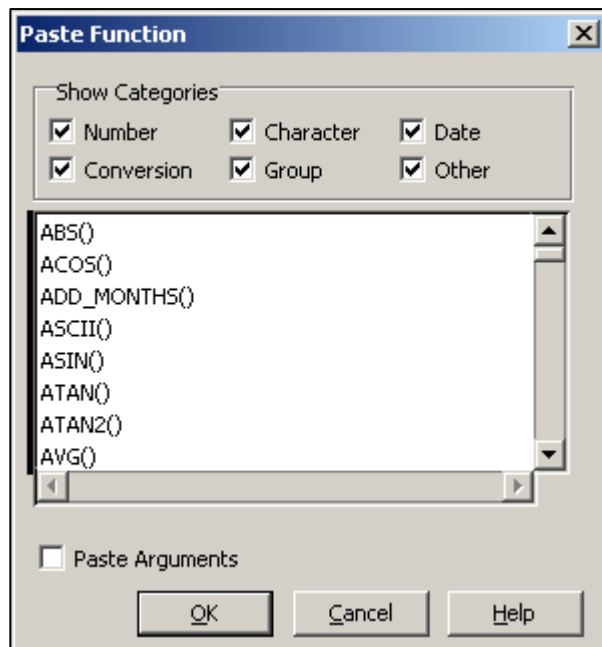
To create a column with a function around it, click on the button with the green plus sign above a disk pack, this will display the following dialog to define a new column.



# Report Wizard - Query Builder in Data Source Definition



The Developer must first name the new column, this will then allow access into the 'Defined as' area where the new column can be set out, this will also enable the Paste Column and Paste Func buttons from which the Developer can select ...

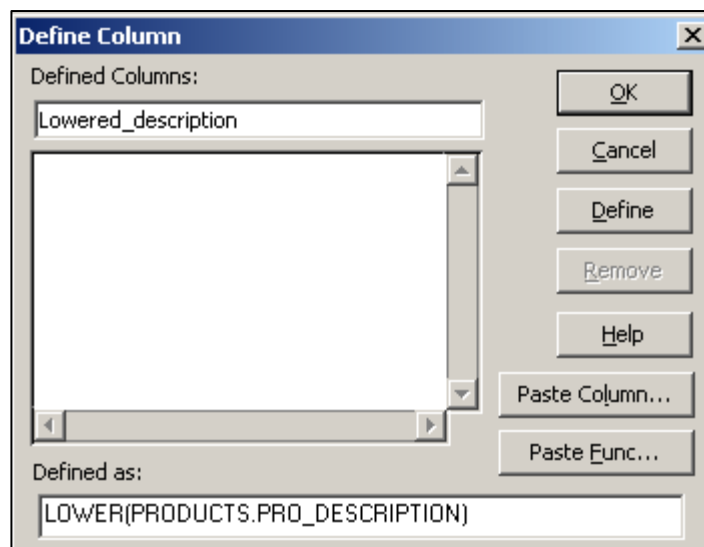




# Report Wizard - Query Builder in Data Source Definition



Here the Developer has created a new column called 'lowered\_description', this will now appear in the list of columns and subsequently in the Data Source Definition dialog ...



	PRODUCTS	
<input checked="" type="checkbox"/>	PRO GROUP NUMBER	789
<input checked="" type="checkbox"/>	PRO PRODUCT NUM	789
<input checked="" type="checkbox"/>	PRO NAME	A
<input checked="" type="checkbox"/>	PRO DESCRIPTION	A
<input type="checkbox"/>	PRO PRICE	789
<input type="checkbox"/>	PRO MARGIN	789
<input type="checkbox"/>	PRO PICTURE	A
<input type="checkbox"/>	PRO CREATED BY	A
<input type="checkbox"/>	PRO CREATED DATE	81
<input type="checkbox"/>	PRO UPDATED BY	A
<input type="checkbox"/>	PRO UPDATED DATE	81
<input type="checkbox"/>	PRO NO IN STOCK	789
<input checked="" type="checkbox"/>	Lowered description	f(8)

# Report Wizard - Query Builder in Data Source Definition



This example is now ready for the Developer to move onto the next option or apply column aliases/labels ..

