



In this section the Developer will learn...

- How to use the Report Wizard to create totalling

Totals – Types of Totals Available in Reports 11g



The default position for most totals available in Reports 11g is directly underneath the column it is totalling, any other position will need to be created manually further on in the development.

The following totalling can be performed on columns...

Sum – Displays the Total value of the contents of the selected field.

Average – Effectively the Total value of the contents, divided by the number of values there are.

Count – The number of values there are.

Minimum – The least value.

Maximum – The highest value.

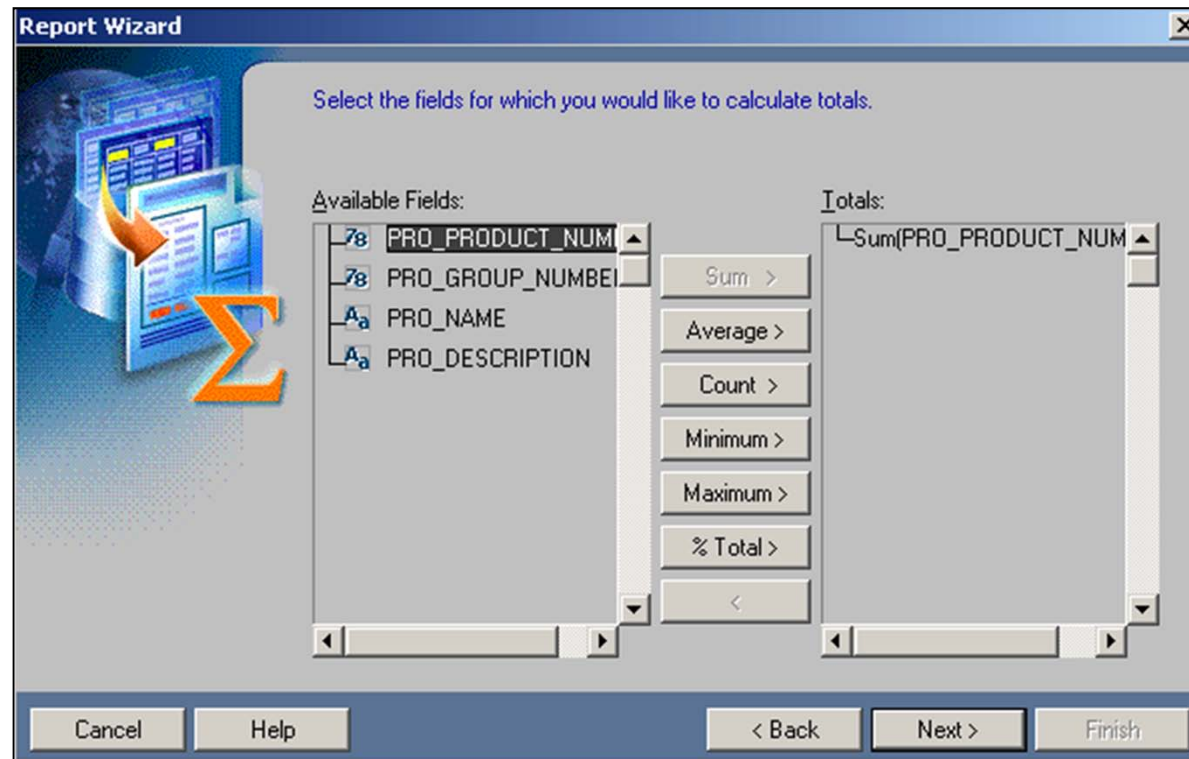
%age of Total – Represents the row value against the Sum of the column. This is displayed per row.



Totals – Using the Report Wizard to Create Totals

The Totals dialog allows the Developer to select the field to be totalled and at the same time, the type of totalling to be performed

...



Totals – Using the Report Wizard to Create Totals



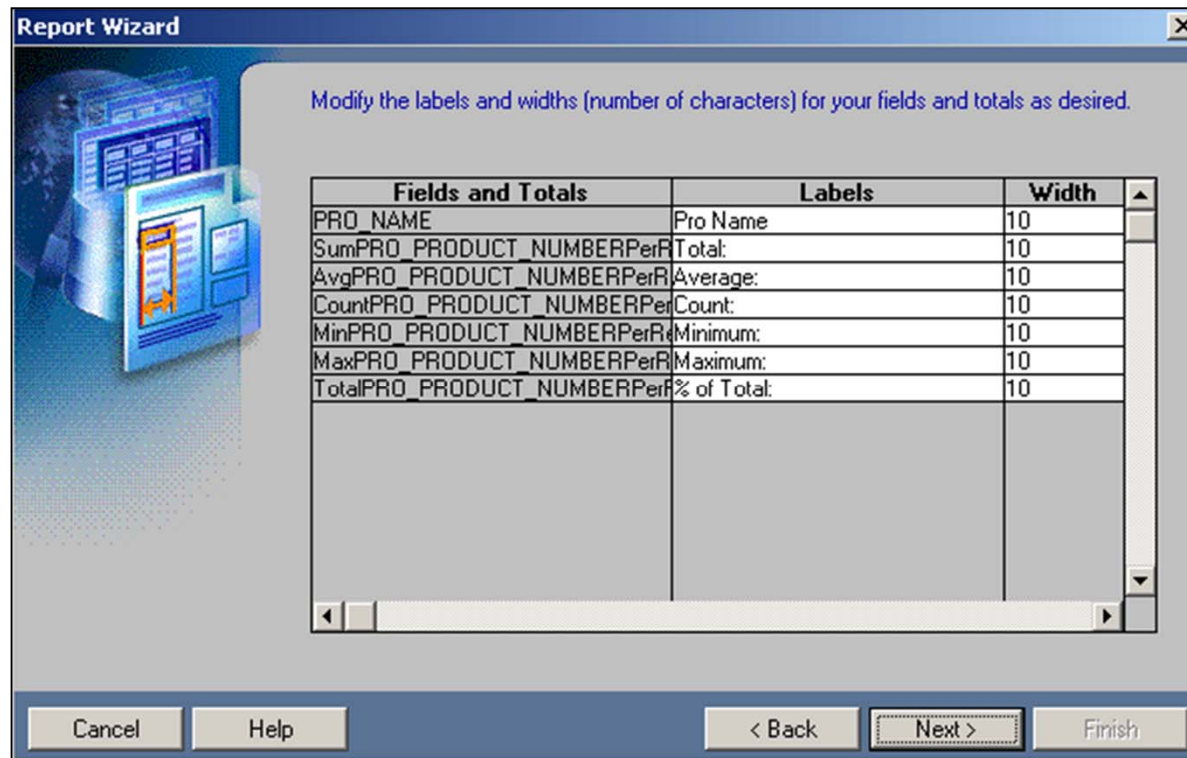
A field can have one or more total types applied to it, but can only have one version of the type at any one time, in addition, the Developer can choose to use a field for totalling even if its not displayed on the Report.

There is not limit to the number of Fields used in totalling or the variety of totals used with it.



Totals – Using the Report Wizard to Create Totals

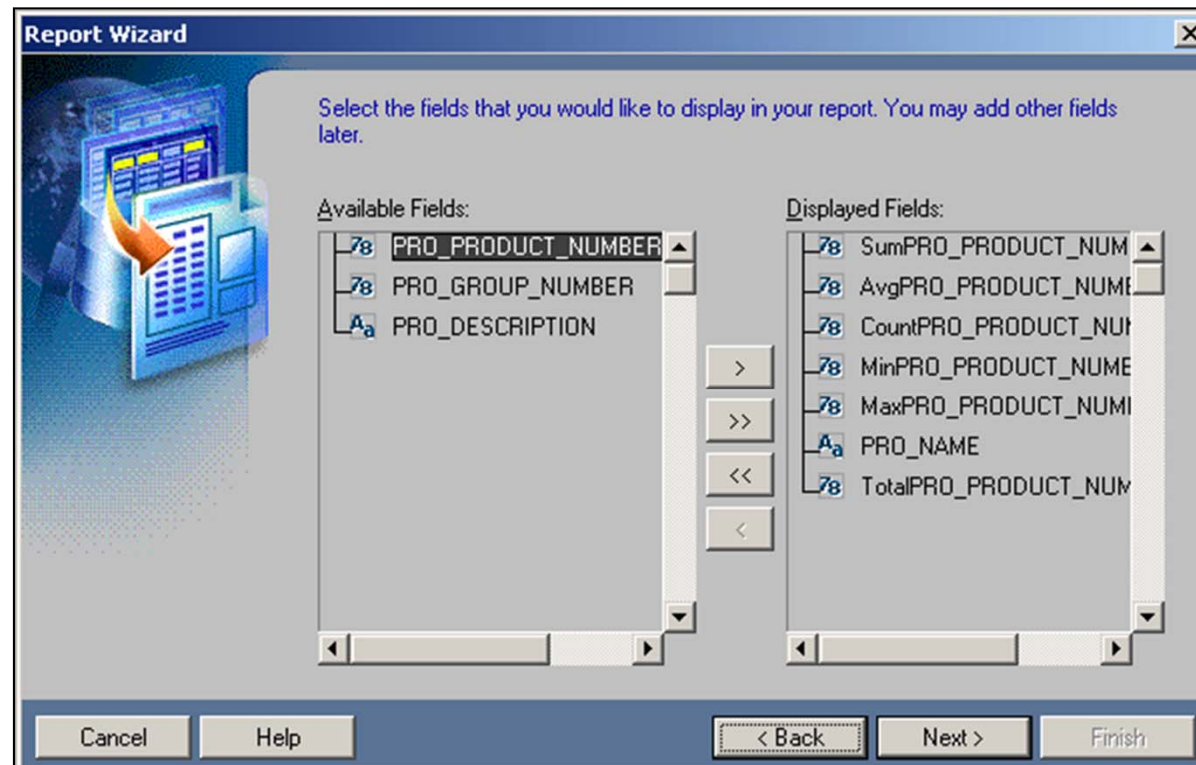
The default label for the total is essentially the name of the function, this will obviously need to be changed if more than one field has the same totalling type ...





Totals – Using the Report Wizard to Create Totals

Returning to the Fields option, note that the Totals are now displayed as selected fields, they can obviously be removed from here but the total functionality will still be working in the background when the Report is run.





Totals – Using the Report Wizard to Create Totals

The following examples display the output of totals against the Product Number in the Products table ...

The left screenshot shows a report editor window titled 'MODULE1: Report Editor - Paper Design'. It displays a table with the following data:

Pro Name	Pro Product Number	% of Total:
LAWNMOWER BLADE	1	2.12%
GNOME	2	1.26%
RUBBER PLANT	3	1.22%
ROSE BUSH - PINK	4	2.89%
ROSE BUSH - RED	5	0.07%
BLUE CIRCLE CEMENT	6	34.66%
COARSE SAND	7	1.67%
FINE SAND	8	4.56%
BREEZE BLOCKS	9	12.69%
RED BRICKS	10	3.64%
ROSE VINYL WALLPAPER	11	3.30%
5 BRUSH SET	12	6.09%
CROWN NON DRIP	13	2.12%
GLOSS - WHITE	14	2.45%
CROWN NON DRIP	14	2.45%
GLOSS - MAGNOLIA	15	1.22%
WALLPAPER PASTE	15	1.22%
NOSTALGIA SUITE	16	0.41%
BATH SIDE PANEL - PINE	17	0.33%
BATH SIDE PANEL - MAHOGANY	18	0.07%
CHROME TAPS	19	1.67%
GOLD EFFECT TAPS	20	2.86%
1 HINGE PACK (LH)	21	1.22%
1 HINGE PACK (RH)	22	5.49%
POZIDRIVE SCREWS 1 INCH	23	1.78%
POZIDRIVE SCREWS 3 INCH	24	3.12%
SLEDGEHAMMER	25	3.08%
Total:	2695	Average: 107.8
Maximum:	934	Count: 25
Minimum:	2	

The right screenshot shows a Microsoft Internet Explorer window displaying the report as a web page. The table data is identical to the report editor window, but includes a summary row at the bottom:

Pro Name	Pro Product Number	% of Total:
LAWNMOWER BLADE	1	2.115027829313543599258
GNOME	2	1.261595547309833024119
RUBBER PLANT	3	1.224489795918367346939
ROSE BUSH - PINK	4	2.894248608534322820037
ROSE BUSH - RED	5	0.0742115027829313543599
BLUE CIRCLE CEMENT	6	34.65677179962894248609
COARSE SAND	7	1.669758812615955473098
FINE SAND	8	4.564007421150278293135
BREEZE BLOCKS	9	12.69016697588126159555
RED BRICKS	10	3.636363636363636363636
ROSE VINYL WALLPAPER	11	3.302411873840445269017
5 BRUSH SET	12	6.085343228200371057514
CROWN NON DRIP GLOSS - WHITE	13	2.115027829313543599258
CROWN NON DRIP GLOSS - MAGNOLIA	14	2.448979591836734693878
WALLPAPER PASTE	15	1.224489795918367346939
NOSTALGIA SUITE	16	4081632653061224489795
BATH SIDE PANEL - PINE	17	.3339517625231910946197
BATH SIDE PANEL - MAHOGANY	18	0.0742115027829313543599
CHROME TAPS	19	1.669758812615955473098
GOLD EFFECT TAPS	20	2.857142857142857142857
1 HINGE PACK (LH)	21	1.224489795918367346939
1 HINGE PACK (RH)	22	5.491651205936920222635
POZIDRIVE SCREWS 1 INCH	23	1.781076066790352504638
POZIDRIVE SCREWS 3 INCH	24	3.116883116883116883117
SLEDGEHAMMER	25	3.07977365491651205937
Total:	2695	Average: 107.8
Minimum:	2	Maximum: 934
Count:	25	