

## Query Builder - Logging on



Normally the shortcut path will not have been modified and therefore Query Builder will display a login box when run.

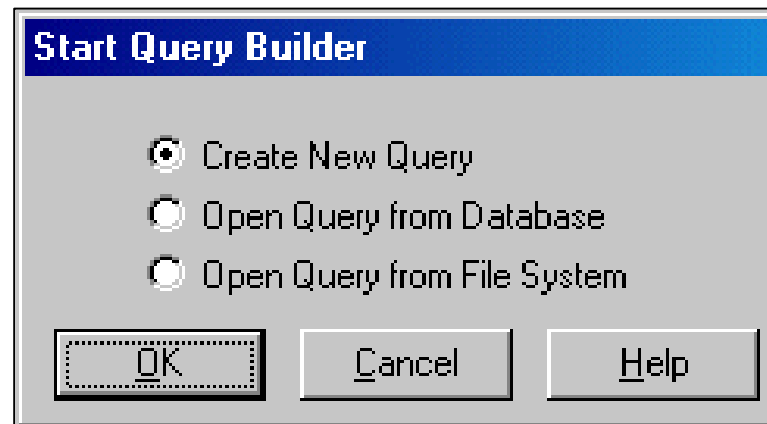
Specify a valid username, password and connection string for the Database in the appropriate boxes

The image shows a standard Windows-style dialog box titled "Connect". It has a blue title bar with the text "Connect" and a close button (X) in the top right corner. The main area of the dialog is light gray and contains three text input fields stacked vertically. The first field is labeled "Username:", the second is labeled "Password:", and the third is labeled "Connect:". Below these fields are three buttons: "Connect", "Cancel", and "Help".

## Query Builder - Successful Logon



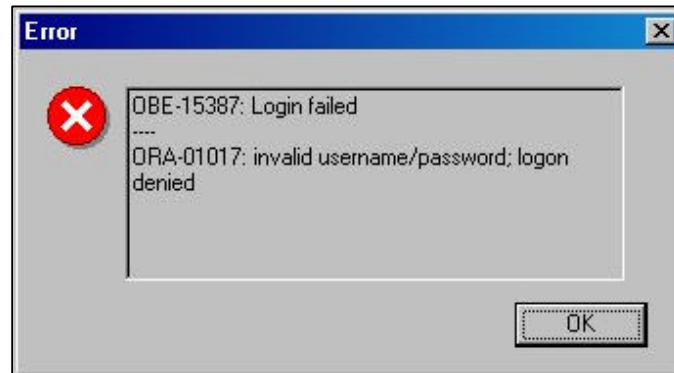
Will display the Start Query Builder Dialog Box from where you can choose to Create a New Query or Open an Existing Query.



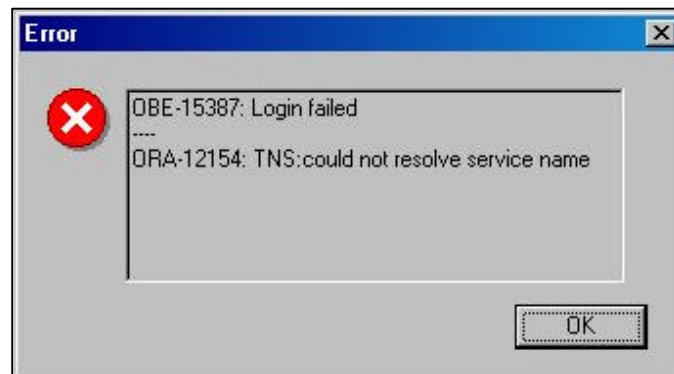
# Query Builder - Unsuccessful Logon



- Entering an invalid username or password will produce this error message.



- Entering an invalid Database connection string will produce this error message.



## Query Builder - Unsuccessful Logon

---



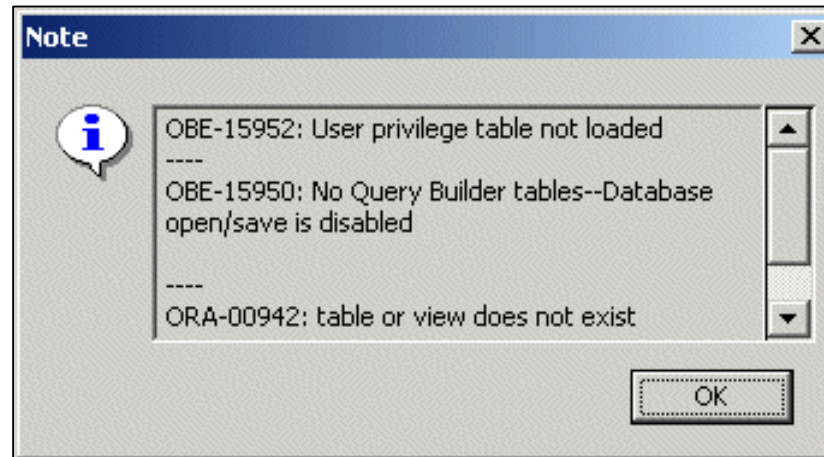
Click OK to return to the Login box for another attempt.

A maximum of three attempts are allowed before Query Builder closes.

# Query Builder - Table Problem



If the DBA has not set up the Query Builder tables, this warning message will appear ..



If this appears, it means that your choice of saving location is limited to the filesystem, the script brwins60 will need to be run to allow saving to the database.