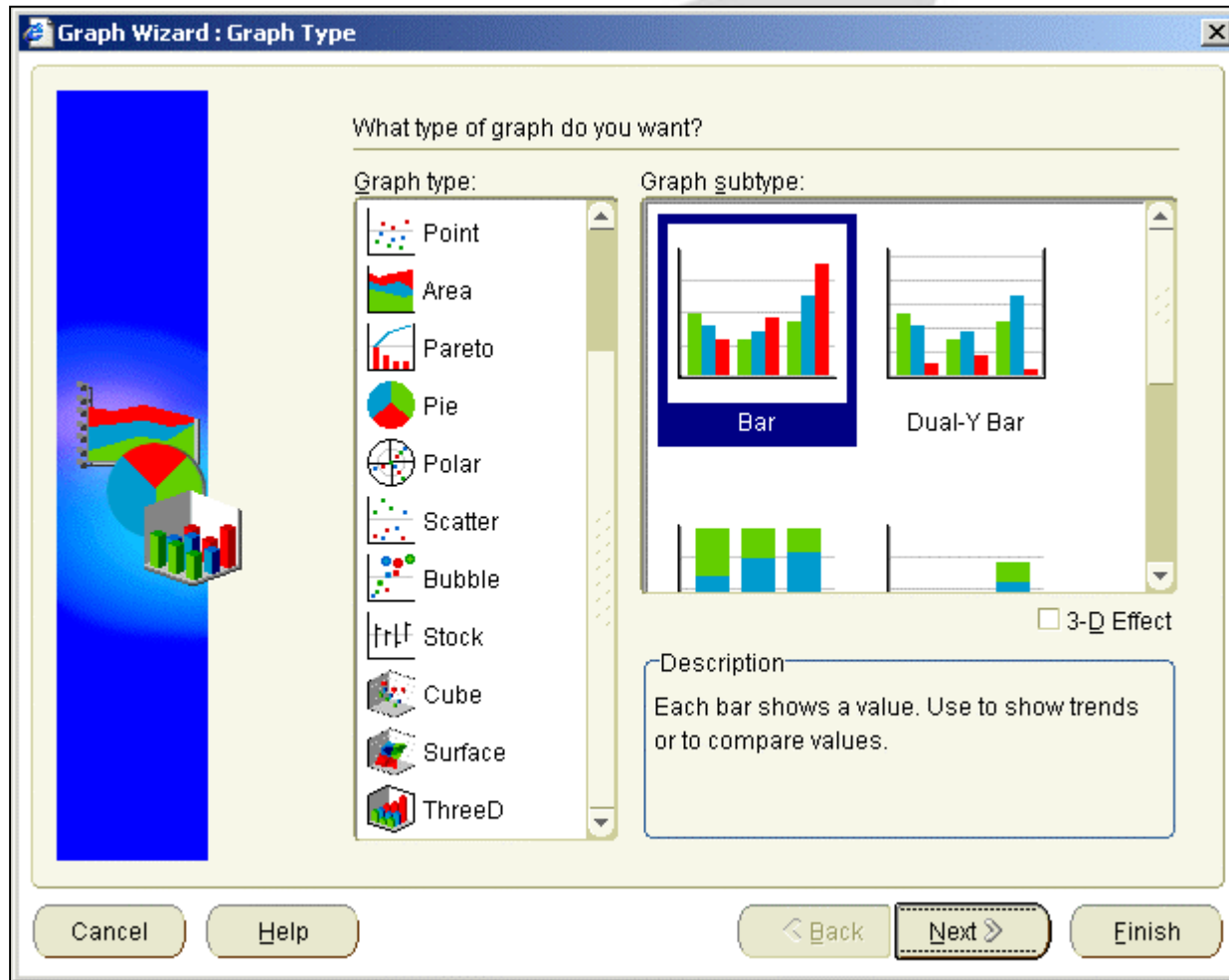


Graphs - Graph Wizard

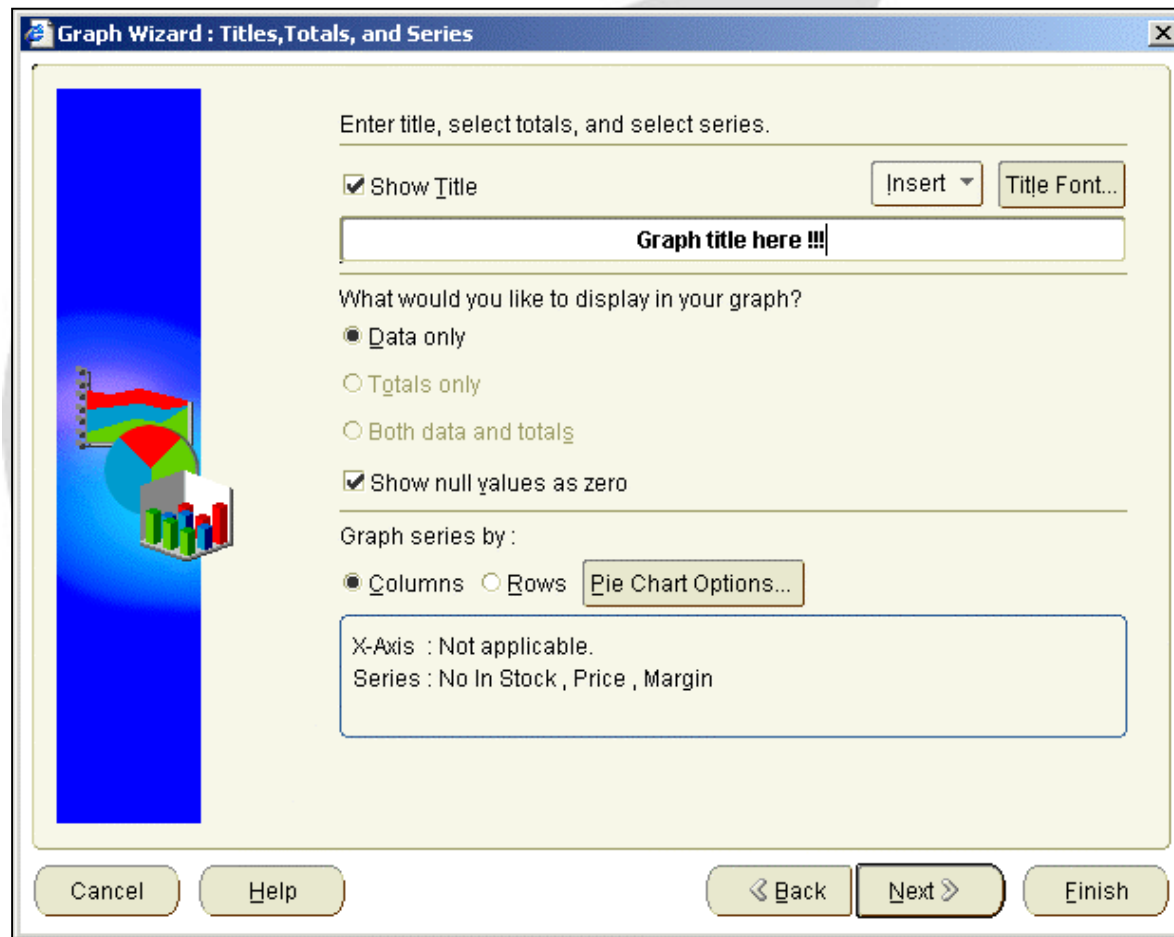


Select the graph type to use and click Next



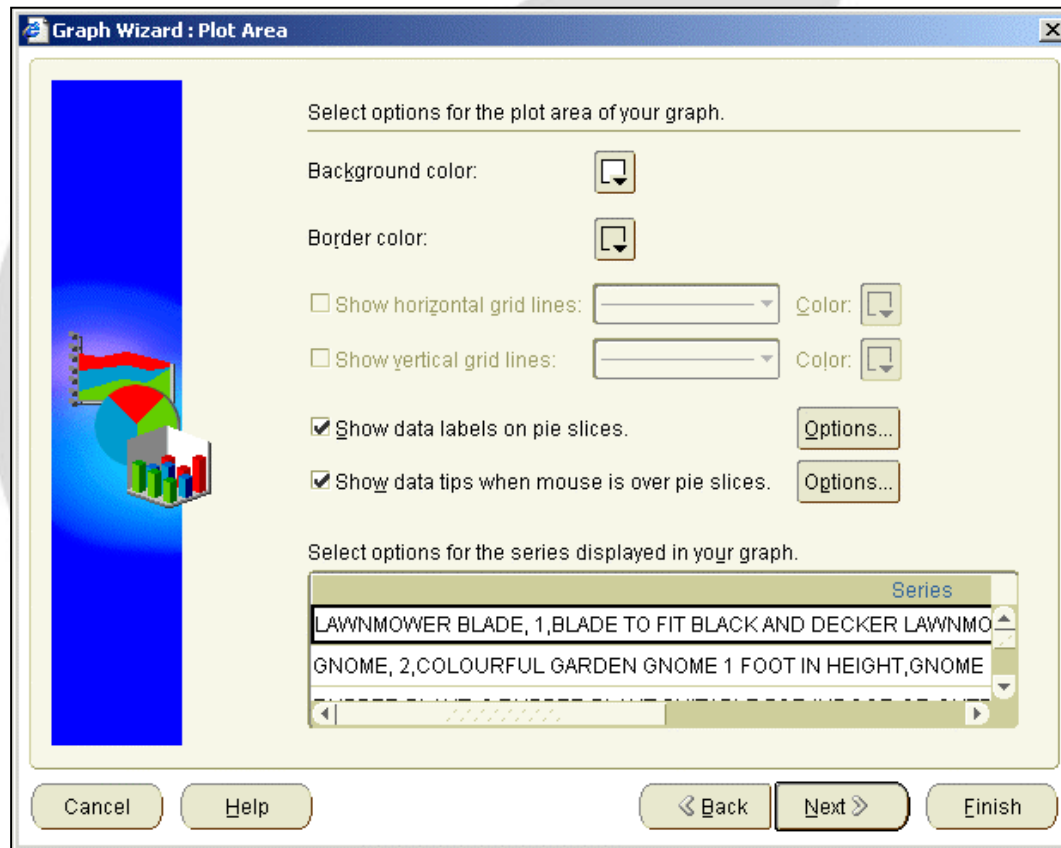


This Dialog allows the input of titles and data selections



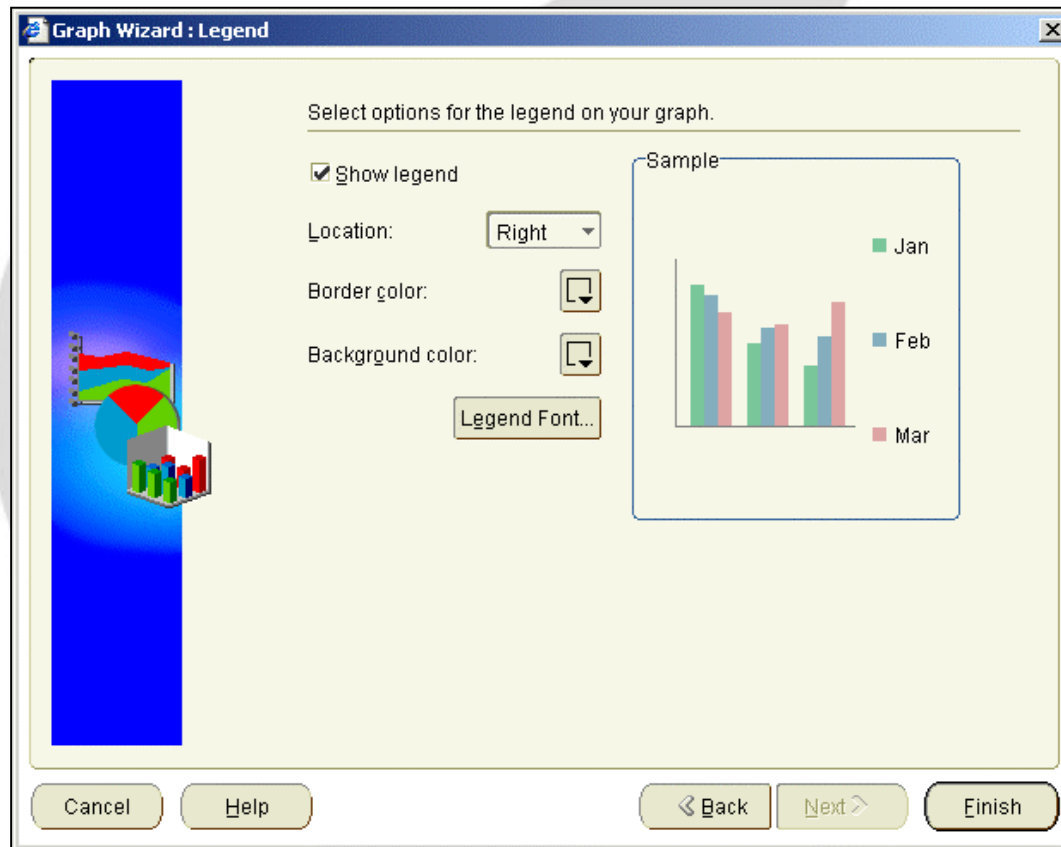


Here the User can select colours and display options





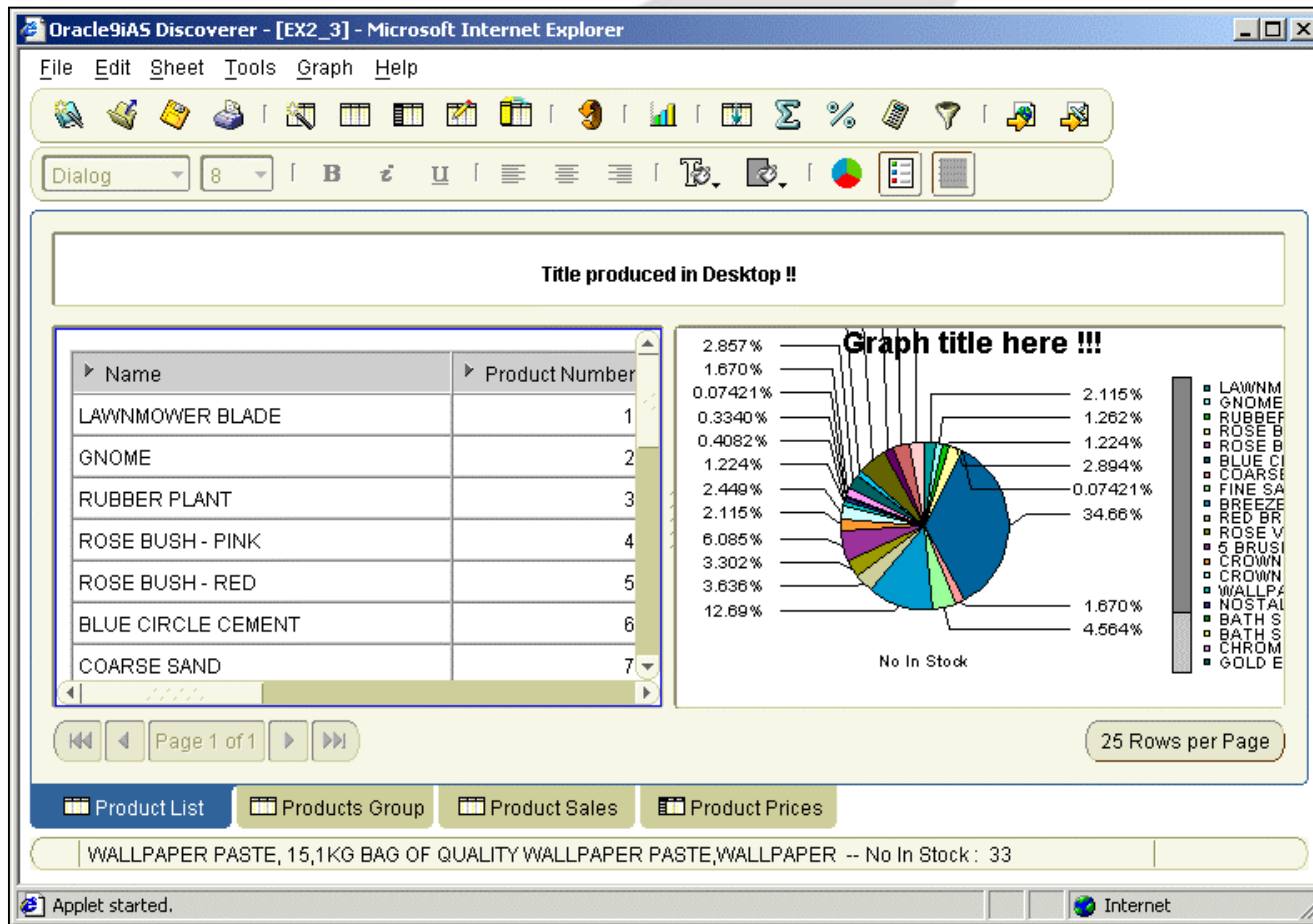
Here the User can select colours and display options for the Legends.



Graphs - Displaying



The graph will be created to the right of the current data within the same browser session





Graphs - Displaying

Once created the Graph options will become available from the Menu

The screenshot shows the Oracle9iAS Discoverer interface in Microsoft Internet Explorer. The 'Graph' menu is open, showing options for displaying the graph. The 'Separate Window' option is selected, with a tooltip that says 'Show the graph in a separate window'. The main area displays a table of products and a pie chart titled 'Graph title here !!!'. The table lists products like LAWNMOWER BLADE, GNOME, RUBBER PLANT, etc. The pie chart shows the distribution of these products, with the largest slice being 'No In Stock' at 34.66%.

Name	Percentage
LAWNMOWER BLADE	0.4082%
GNOME	1.224%
RUBBER PLANT	2.449%
ROSE BUSH - PINK	2.115%
ROSE BUSH - RED	6.085%
BLUE CIRCLE CEMENT	3.302%
COARSE SAND	3.636%
No In Stock	34.66%

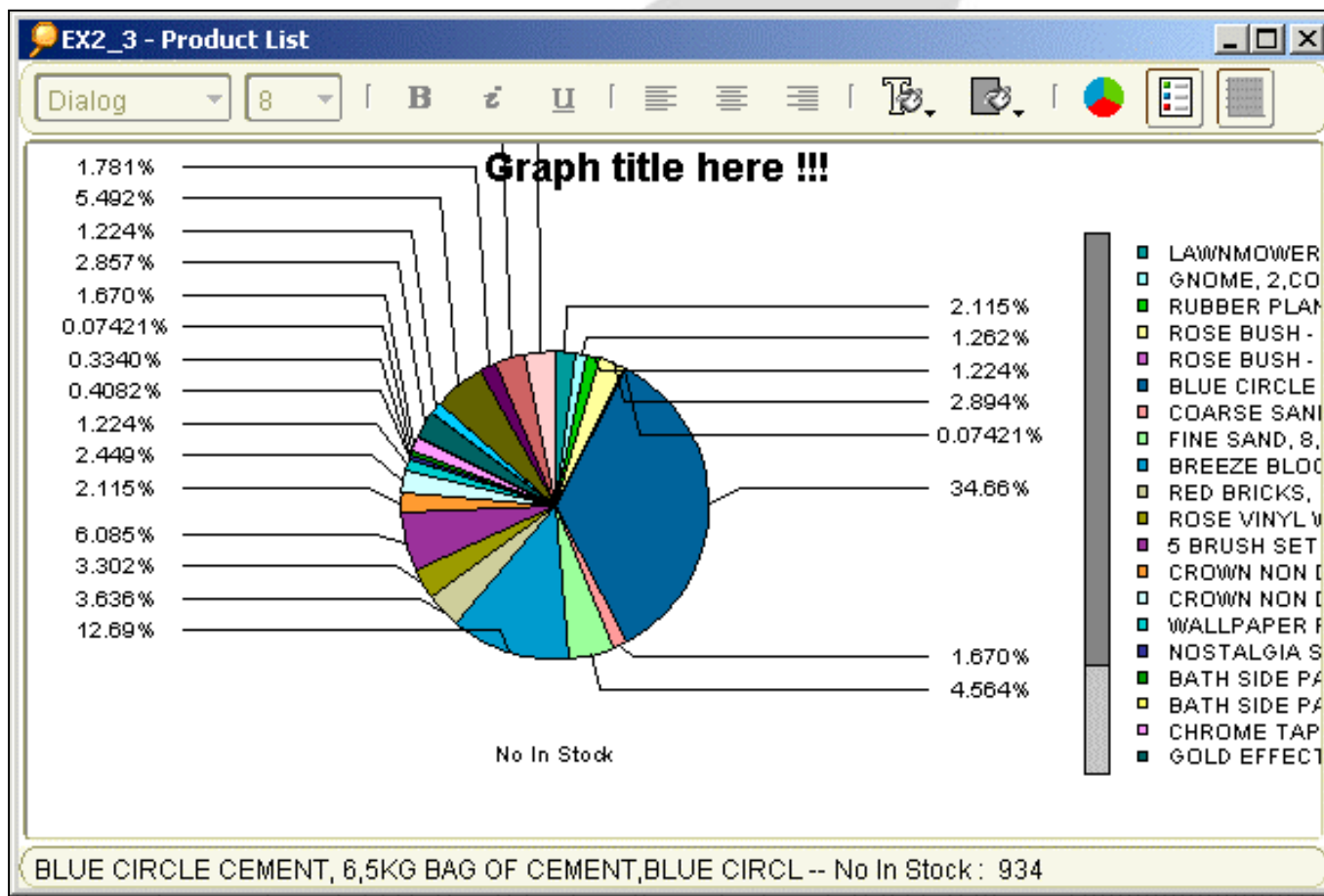
Legend for Pie Chart:

- LAWNMOWER BLADE
- GNOME
- RUBBER PLANT
- ROSE BUSH - PINK
- ROSE BUSH - RED
- BLUE CIRCLE CEMENT
- COARSE SAND
- No In Stock

Graphs - Displaying



In this example the User has decided to display the graph in a separate window ..



Graphs - Displaying



And in this the graph is displayed at the top of the data and is being re-sized ..

The screenshot displays two overlapping windows of Oracle9iAS Discoverer. The foreground window shows a pie chart titled "Title produced in Desktop !!". The chart is labeled "Graph title here !!!" and "No In Stock". The data is as follows:

Percentage	Product Name
2.857%	LAWN MOWER BLA
1.670%	SOBER PLAN 10
0.07421%	ROSE BUSH BLA
0.3340%	ROSE CIRCLE REV
0.4082%	ROSE SAND 7.5K
1.224%	ROSE SAND 10.5K
2.449%	ROSE SAND 15.5K
2.115%	ROSE SAND 20.5K
6.085%	ROSE SAND 25.5K
3.302%	ROSE SAND 30.5K
3.636%	ROSE SAND 35.5K
12.69%	ROSE SAND 40.5K
2.115%	ROSE SAND 45.5K
34.66%	ROSE SAND 50.5K
1.670%	ROSE SAND 55.5K
4.564%	ROSE SAND 60.5K

The background window shows a similar interface with a pie chart and a table with columns for Name, Product Number, and Description. The table has 25 rows per page.



To remove the graph from display either open it in a separate window or delete it ...

