

# Exercise Five

---



5.1 Create a module with a hierarchical tree item simply listing all Stock in the Stock Information table, users selecting a node will then display all relevant sales information in the Stock Sales table.

Before any nodes are selected please display the Seer Logo square.jpg image found in the C:\course folder.

Use the Data Query approach to populating your tree.

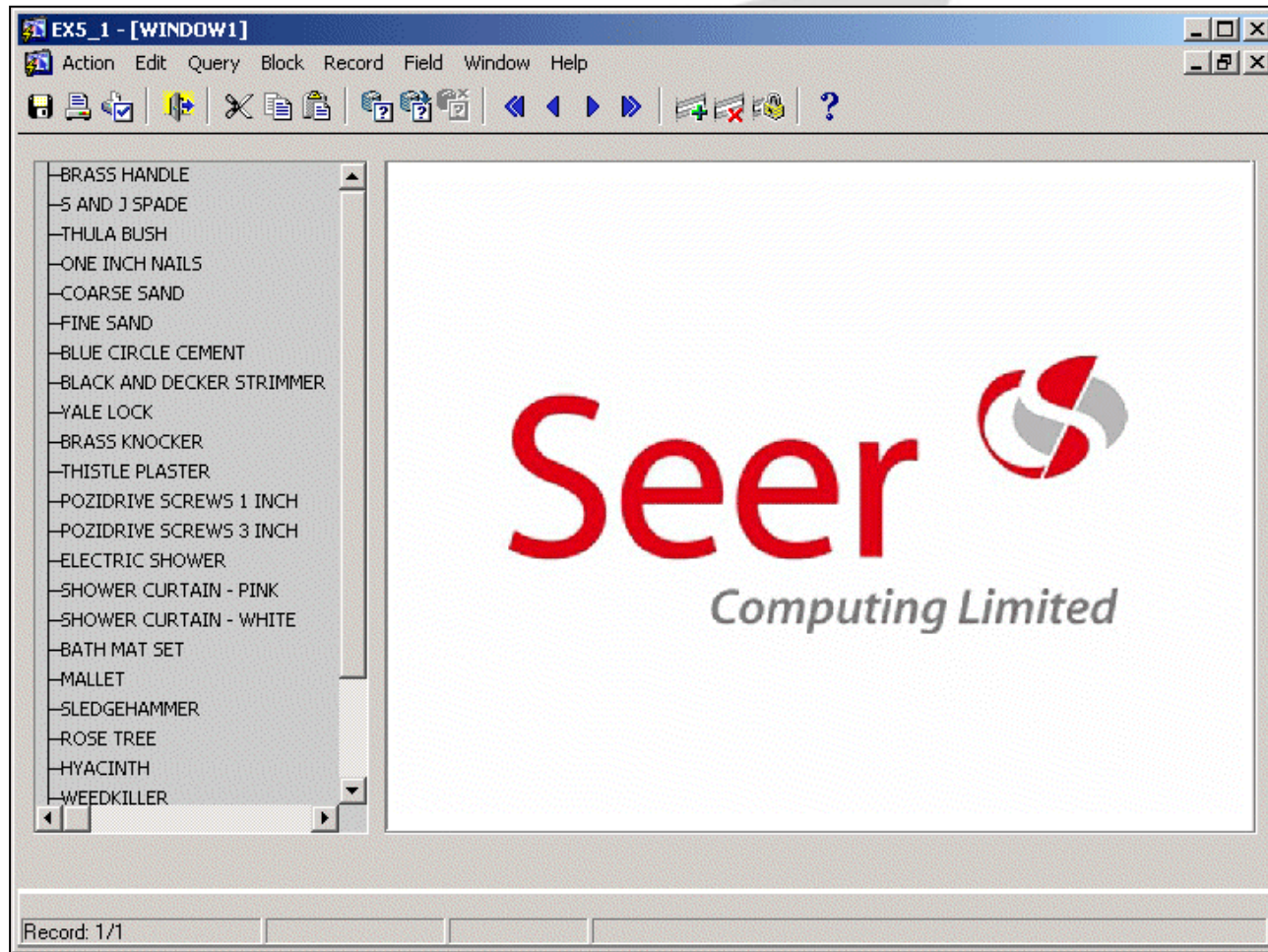
Make the Stock Sales block Query Only.

Save the module as c:\course\ex5\_1.

# Exercise Five



## 5.1 continued





# Exercise Five

---



5.2 Create a module with a hierarchical tree item listing all Stores and their parents, users selecting a node will then display all relevant store details from the Store Locations table.

Before any nodes are selected please display the Seer Logo square.jpg image found in the C:\course folder.

Use the Record Group approach to populating your tree.

Make the Store Locations block Query Only.

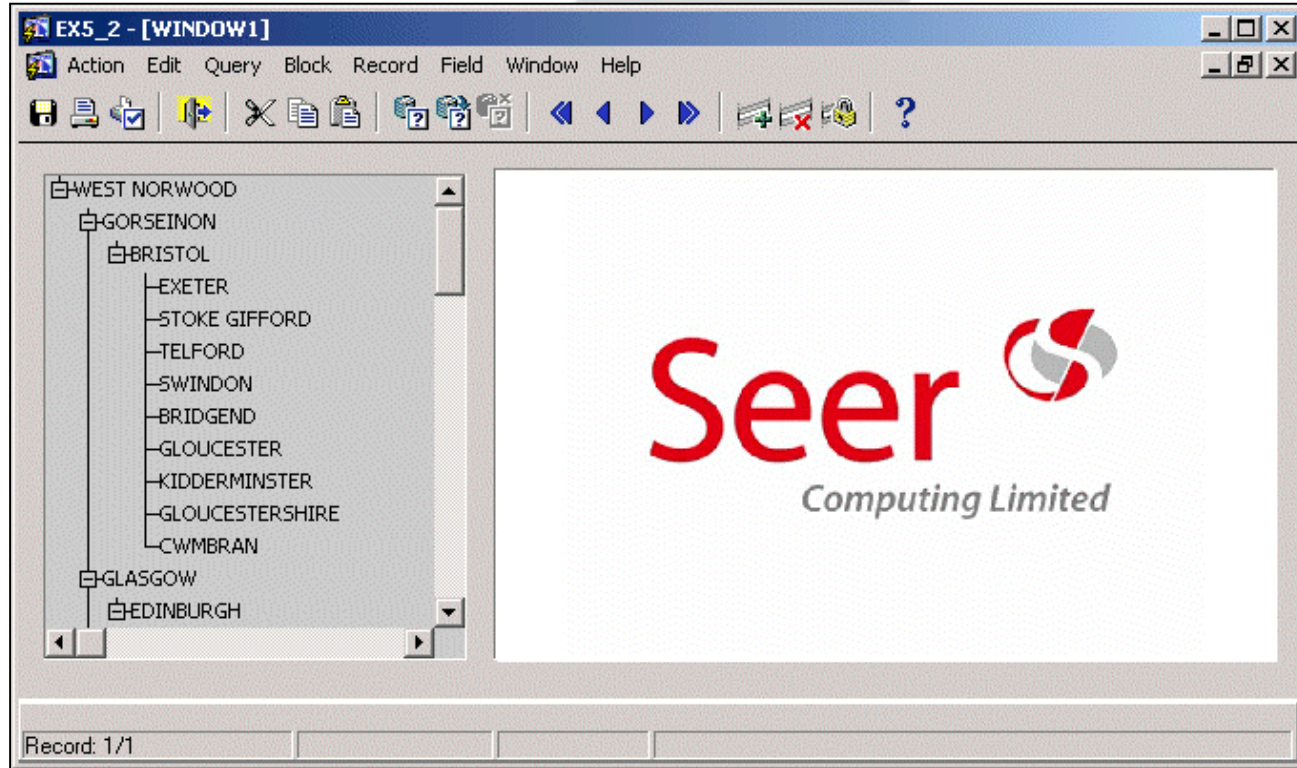
Populate the Location Type description with values from the Location\_Type table.

Save the module as c:\course\ex5\_2.

# Exercise Five



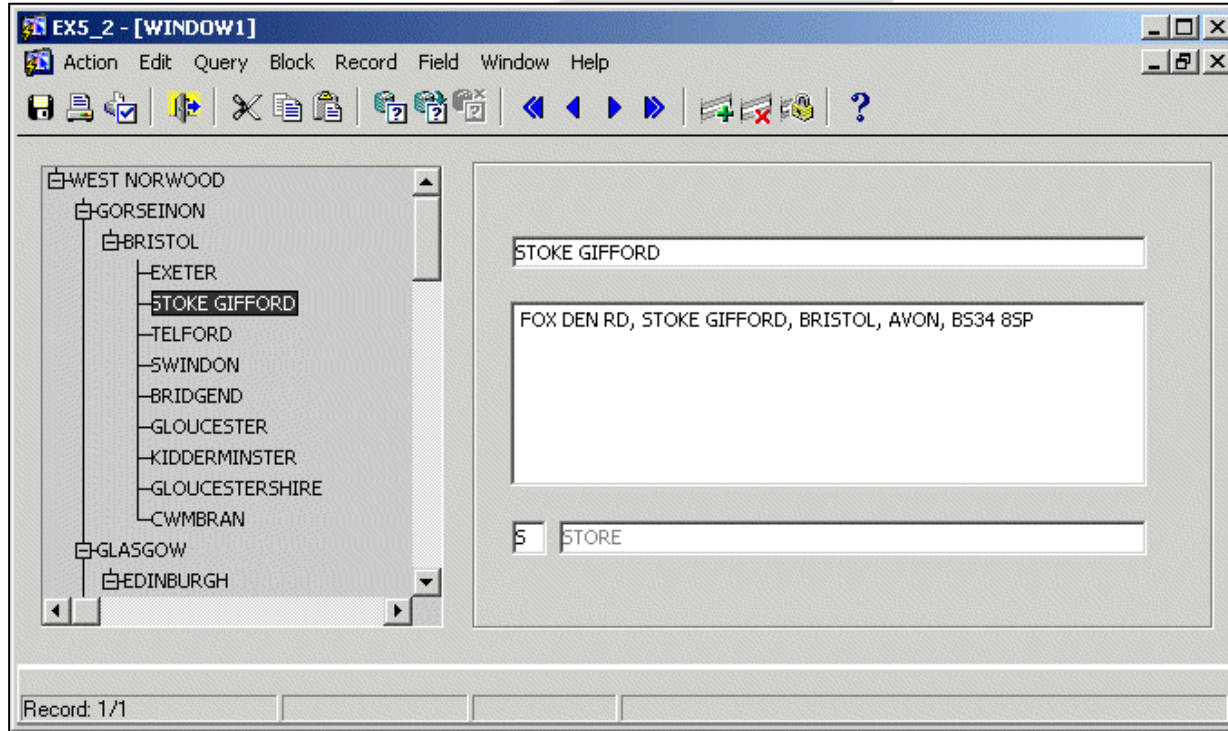
## 5.2 continued



# Exercise Five



## 5.2 continued



# Exercise Five

---



5.3 If there is sufficient time, convert ex5\_1 to use Record Groups and convert ex5\_2 to use Data Query. Save the module as c:\course\ex5\_3 and c:\course\ex5\_4.

