



Exercise Three

3.1 Create a new module in Forms builder.

3.2 Create a data block based on the SECTION_DETAILS table, this is to be the new Master block, therefore it is recommended that the Block is created for one record only in Form layout with the following columns ...

- sd_section_number
- sd_section_name
- sd_section_type

Hint: The item labels or boilerplate can be amended either in the items Property Palette or by double clicking on the boilerplate itself in the Layout Editor.

Note that the frame property of Update Layout must be switched to 'Manually'

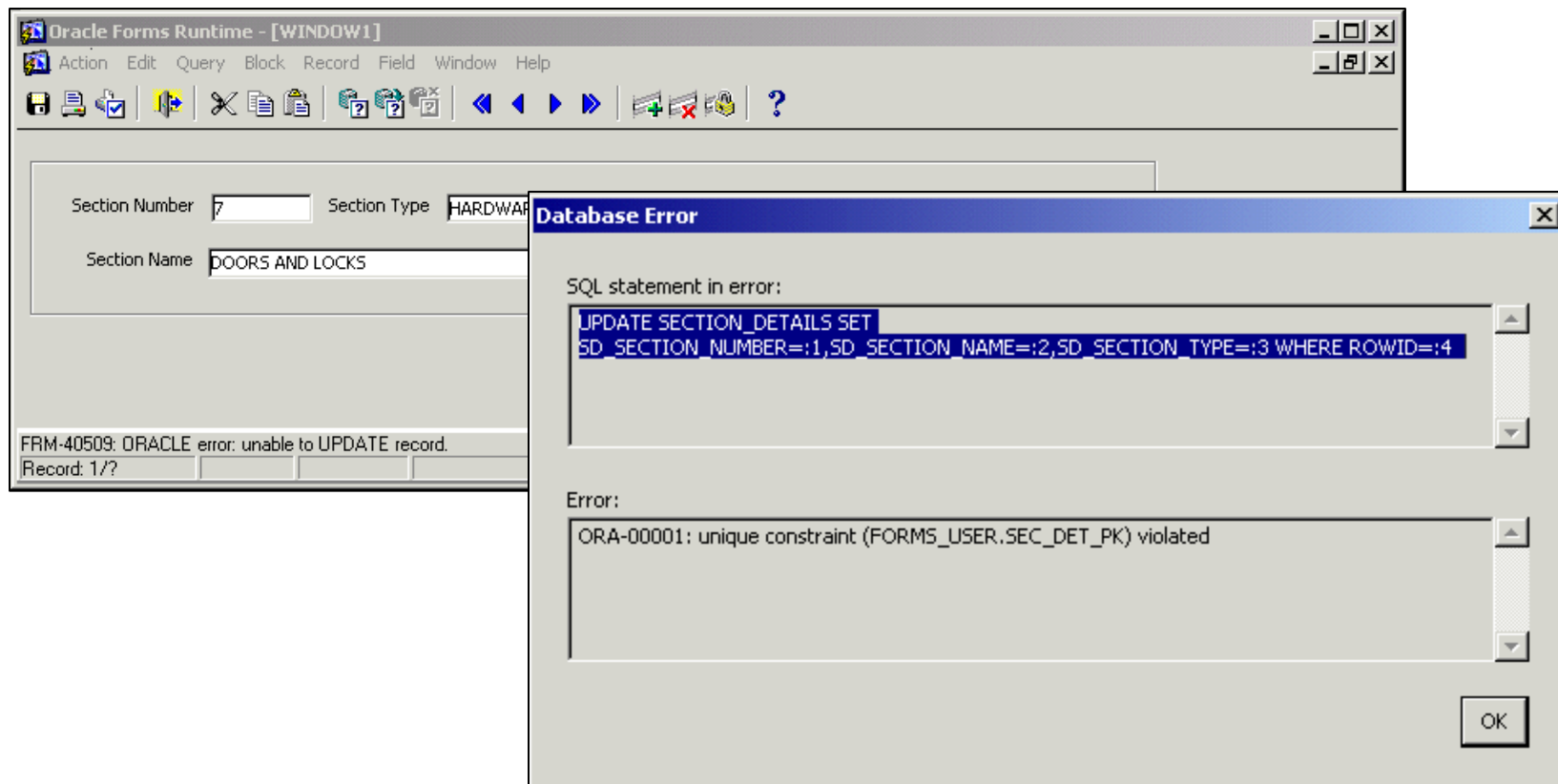
The screenshot shows a Windows application window titled "WINDOW1". Inside the window, there is a form with three input fields. The first field is labeled "Section Number" and contains the value "1". The second field is labeled "Section Type" and contains the value "HARDWARE". The third field is labeled "Section Name" and contains the value "DOORS AND LOCKS".



Exercise Three

3.3 Query records in the Form, change the Section Number in the record for BUILDING to 1000

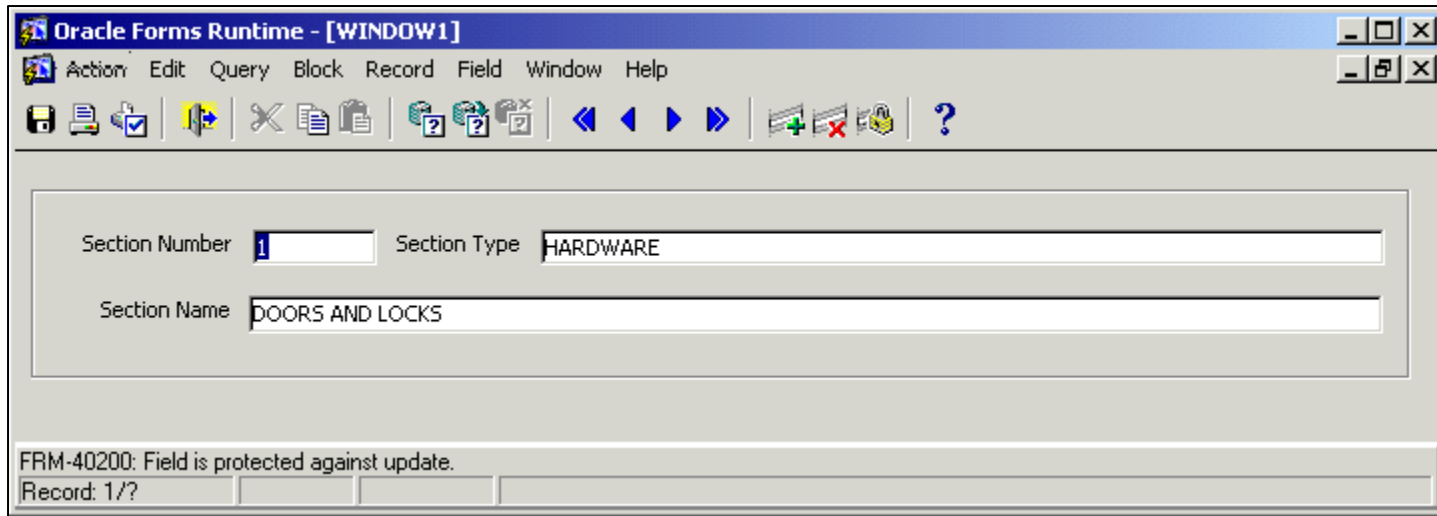
3.4 Save the changes, note that an error message is displayed, go to the help -> display error and this will inform you that the Primary Key has been compromised. Set the Property for this item to prevent Updates.



Exercise Three



3.5 Run the module again and confirm that this change has been effective.



3.6 Perform an enter-query, observe that the Section Name can be entered in query mode, change the Property for this item to prevent this occurring.

3.7 Save this module as EX3_6



Exercise Three

3.8 Create a new data block based on the STOCK_INFORMATION table which is to be a detail block to the section details master block created earlier. Include the following items ...

- si_stock_number
- si_section_number
- si_stock_description
- si_unit_price
- si_no_in_stock.

Make sure the items in the block are on the same canvas as used by section details. Include all items in the layout, other than si_section_number.

The screenshot shows a software window titled "WINDOW1" with a form and a data table. The form has the following fields:

- Section Number: 1
- Section Type: HARDWARE
- Section Name: DOORS AND LOCKS

Below the form is a table with the following data:

Stock Number	Stock Description	Unit Price	No In Stock
1	BRASS HANDLE	12.99	100
9	YALE LOCK	9.99	15
10	BRASS KNOCKER	15.99	10
25	HINGE PACK (LH)	6.99	10
26	HINGE PACK (RH)	6.99	0

Below the table is a larger table with the same data, but with a different layout:

Stock Number	Stock Description	Unit Price	No In Stock
1	BRASS HANDLE	12.99	100
9	YALE LOCK	9.99	15
10	BRASS KNOCKER	15.99	10
25	HINGE PACK (LH)	6.99	10

Exercise Three



3.9 Save the form as EX3_8

3.10 Note that when the module is run the cursor may appear in the Detail block, this is because it is sequentially higher than the Master block, drag it below the Master block in the Object Navigator.

3.11 Re-run the module and check that this action has been effective.

3.12 Go to the Relations object of the Section Details block and delete the existing Relation. Note that removing the Relation will also delete all associated triggers and Program Units.

3.13 Manually create a new relation for the blocks.

Hint: The SD_SECTION_NUMBER is the foreign key for SI_SECTION_NUMBER

3.14 Re-run the module and check that this action has been effective.

3.15 Save the form as EX3_14