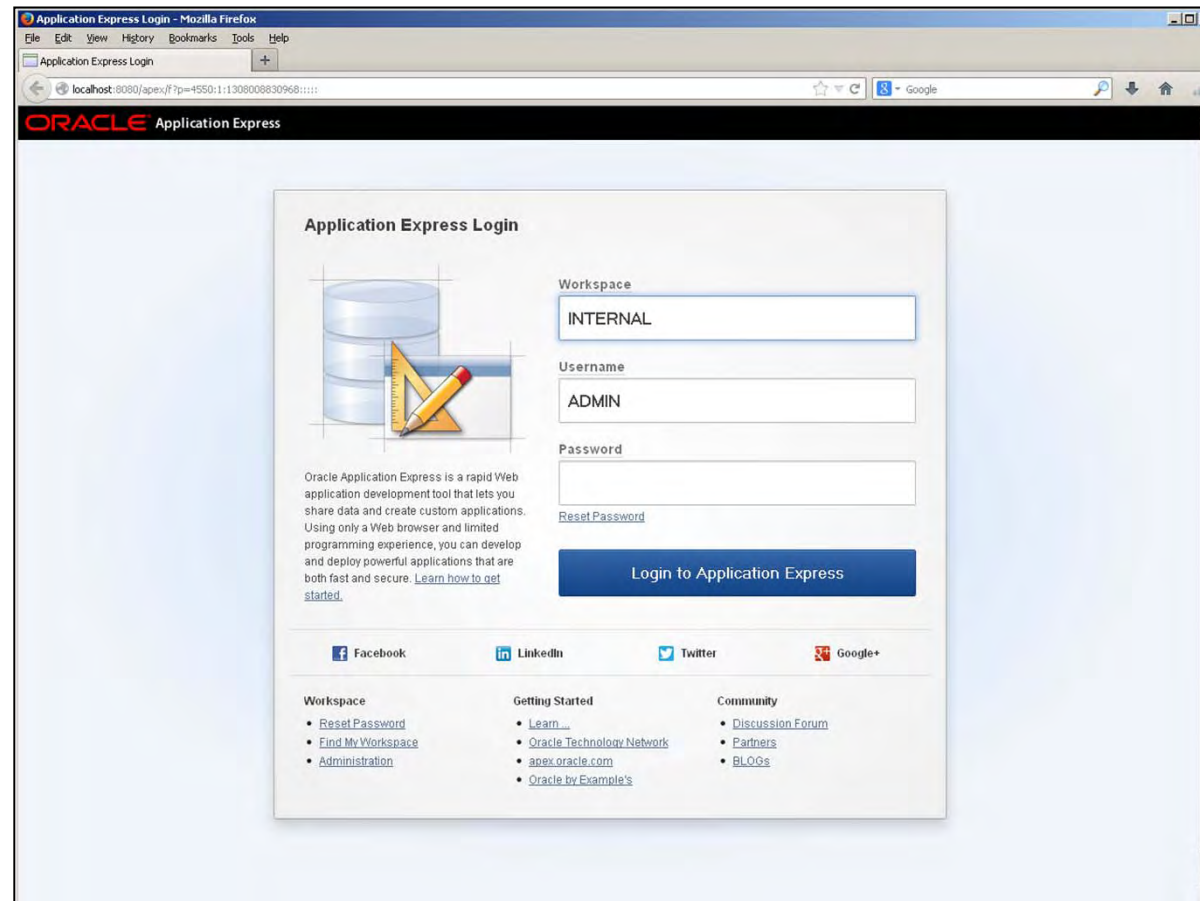


Using Application Express – Logging in



Double clicking on the shortcut will invoke the browser and display the following logon screen ...




Using Application Express – Logging in



Enter the login details given to you by the Administrator ...

Application Express Login



Oracle Application Express is a rapid Web application development tool that lets you share data and create custom applications. Using only a Web browser and limited programming experience, you can develop and deploy powerful applications that are both fast and secure. [Learn how to get started.](#)

Workspace
sql1000

Username
sql1000_user

Password
●●●●●●●●●●

[Reset Password](#)

Login to Application Express

Using Application Express – Logging in



This will then display the dashboard for the session ...

The screenshot displays the Oracle Application Express dashboard. At the top, the header includes the Oracle logo, 'Application Express', and the workspace name 'Workspace: SQL1000 (Logout)'. Navigation tabs for 'Home', 'SQL Workshop', and 'Administration' are visible. The main content area contains two large tiles: 'SQL Workshop' with a 'SQL >' icon and a gear, and 'Administration' with a speedometer icon and a person icon. Below these are sections for 'News', 'Top Applications', and 'Top Users'. The 'Top Users' section shows a bar chart for 'sql1000_user' with a value of '9'. On the right side, there are utility panels: 'About' (describing Application Express), 'Available Updates' (indicating the system is up-to-date), and 'Accessibility Mode' (set to 'Standard'). The footer contains 'Page events: 1 hours (Edit Reporting Timeframe)', 'Workspace: SQL1000 User: SQL1000_USER', 'Application Express 4.2.4.00.08', and 'Language: en | Copyright © 1999, 2013, Oracle. All rights reserved.'



The Workspace is defined by an Administrator for the Users and Developers to work in. The Administrator can specify the amount of access the Users have to the Workspace.

A User can have access to more than one Workspace but must specify the required Workspace to use when logging in.

The Workspace is an environment for the Users and Developers to work in and is completely separate from all others in the Apex system, although work in one Workspace can be transferred to another.



A Schema in an Oracle Database is the area which a User logs into, it is firstly a way to identify who is on the Database at anytime but also acts as a work area to store the User's tables and other Database Objects.

Generally the Workspace in Application Express is a means of accessing the appropriate Schema or Schemas with a great deal of control, more than one person will access the Schema but probably with differing degrees of security.

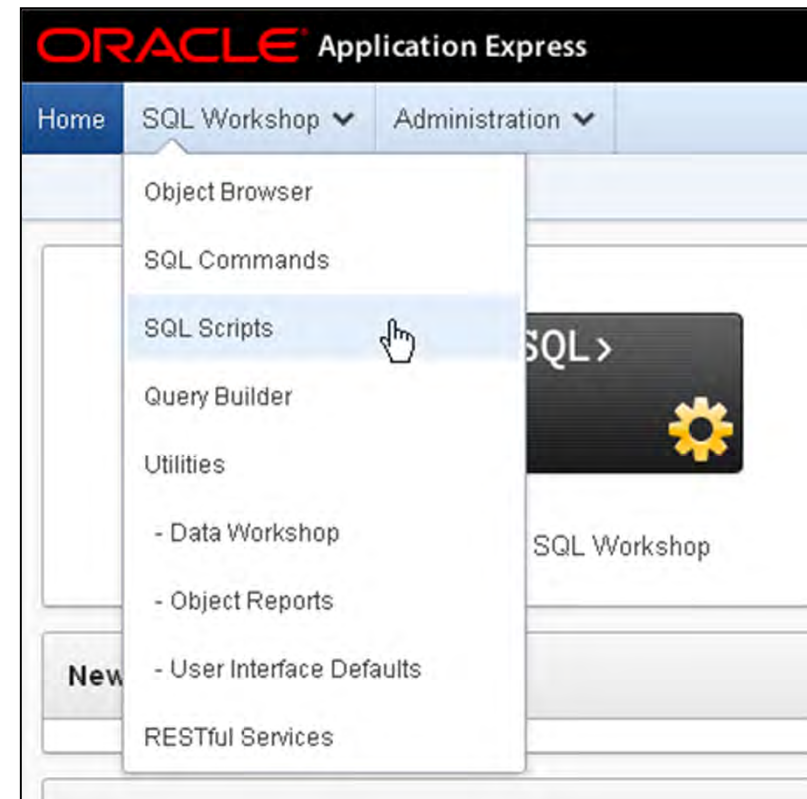
The Schema can be accessed outside the Workspace using other products however the login will be entirely different.

Using Application Express – Dashboard Topography



This is the home page for Application Express and this version is the most basic because of the lack of privilege for this user, at the top is the menu, this consists of two parts, the SQL Workshop and the Administration.

Clicking on SQL Workshop will give a large number of options, to be explored during the course ...



Using Application Express – SQL Workshop



This is the SQL Workshop sub-menu ...

The screenshot shows the Oracle Application Express SQL Workshop interface. At the top, there is a navigation bar with 'Home', 'SQL Workshop', and 'Administration' menus. The main area contains several tool icons: Object Browser, SQL Commands, SQL Scripts, Utilities, and RESTful Services. Below these are two panels: 'Recently Created Tables' and 'Recent SQL Commands'. The 'Recently Created Tables' panel lists several tables with their creation times. The 'Recent SQL Commands' panel shows 'No SQL commands found'. On the right side, there are sections for 'About', 'Preference' (with a schema dropdown set to 'SQL1000_USER'), and 'Tasks' (with a 'Create Database Object' button). The footer includes 'Workspace: SQL1000 User: SQL1000_USER', 'Application Express 4.2.4.00.08', and 'Language: en | Copyright © 1999, 2013, Oracle. All rights reserved.'

Table Name	Created
TEST3	26 hours ago
EBA_DEMO_CAL_PROJECTS	27 hours ago
HTMLDB_PLAN_TABLE	27 hours ago
TEMP	2 weeks ago
VIRTUAL_EXAMPLE	2 weeks ago
TEST	9 months ago
SHARE_INDEX	9 months ago