



Table Manipulation – Adding Columns

Adding columns to an existing Table is limited to adding it to the bottom of existing columns.

The new Column cannot be specified as mandatory even if the table is null (a requirement even when running the create column in the SQL Worksheet).

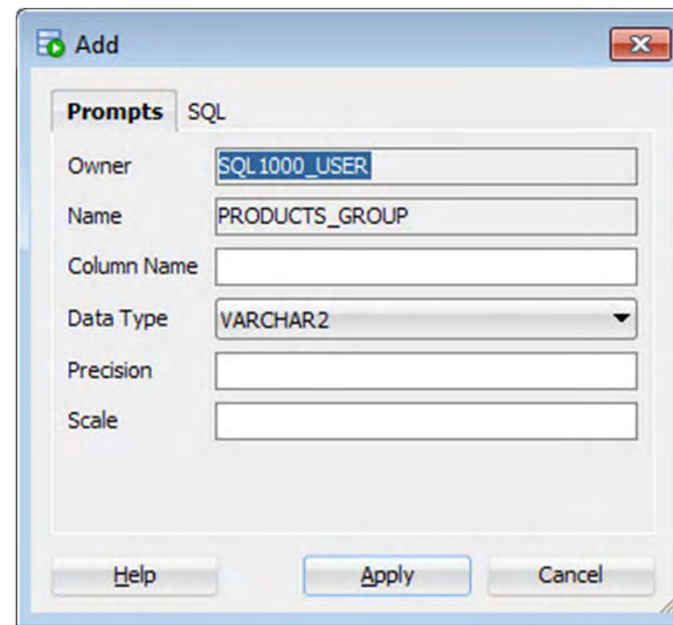


Table Manipulation – Adding Columns



When completing the previous dialog the User must ensure that the precision element is completed, this is effectively the size of the datatype, omitting it from varchar2 gives the following error ...

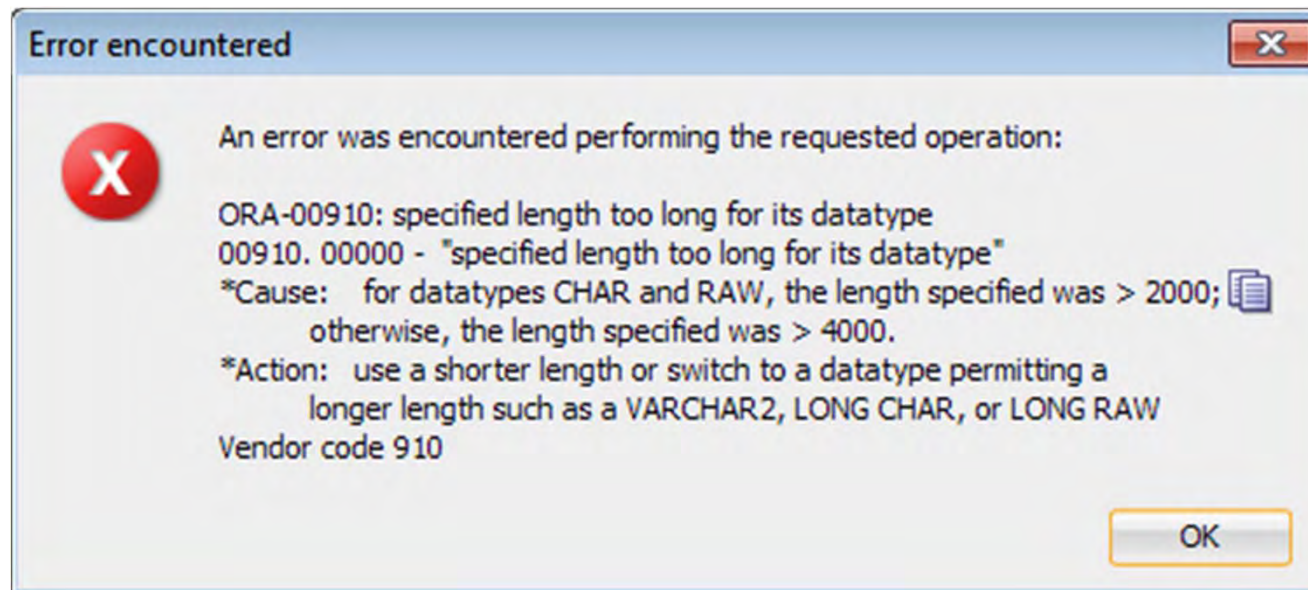
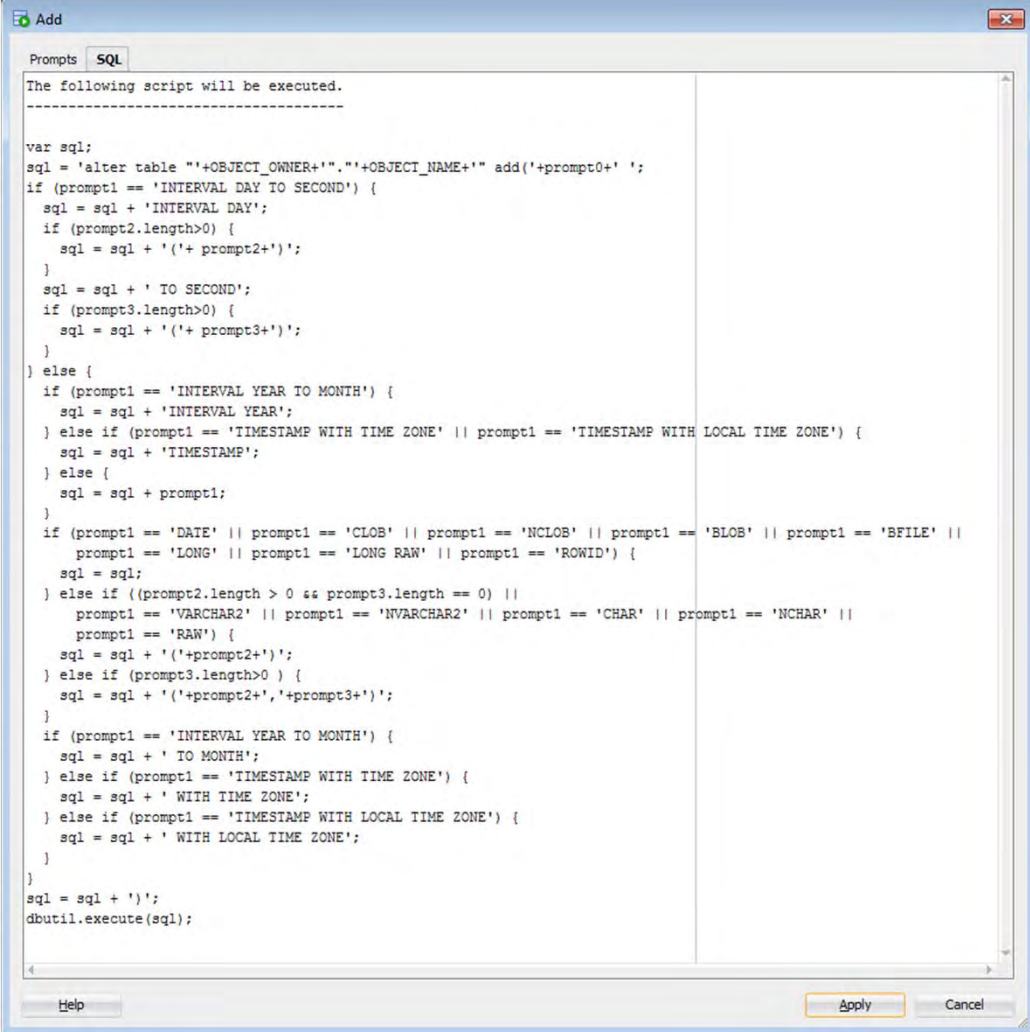




Table Manipulation – Adding Columns SQL Syntax

The DDL for adding columns is complicated in SQL Developer ...



```
var sql;
sql = 'alter table "'+OBJECT_OWNER+'."' +OBJECT_NAME+' " add('+prompt0+' ';
if (prompt1 == 'INTERVAL DAY TO SECOND') {
    sql = sql + 'INTERVAL DAY';
    if (prompt2.length>0) {
        sql = sql + '('+ prompt2+')';
    }
    sql = sql + ' TO SECOND';
    if (prompt3.length>0) {
        sql = sql + '('+ prompt3+')';
    }
} else {
    if (prompt1 == 'INTERVAL YEAR TO MONTH') {
        sql = sql + 'INTERVAL YEAR';
    } else if (prompt1 == 'TIMESTAMP WITH TIME ZONE' || prompt1 == 'TIMESTAMP WITH LOCAL TIME ZONE') {
        sql = sql + 'TIMESTAMP';
    } else {
        sql = sql + prompt1;
    }
}
if (prompt1 == 'DATE' || prompt1 == 'CLOB' || prompt1 == 'NCLOB' || prompt1 == 'BLOB' || prompt1 == 'BFILE' ||
    prompt1 == 'LONG' || prompt1 == 'LONG RAW' || prompt1 == 'ROWID') {
    sql = sql;
} else if ((prompt2.length > 0 && prompt3.length == 0) ||
    prompt1 == 'VARCHAR2' || prompt1 == 'NVARCHAR2' || prompt1 == 'CHAR' || prompt1 == 'NCHAR' ||
    prompt1 == 'RAW') {
    sql = sql + '('+prompt2+')';
} else if (prompt3.length>0) {
    sql = sql + '('+prompt2+', '+prompt3+')';
}
if (prompt1 == 'INTERVAL YEAR TO MONTH') {
    sql = sql + ' TO MONTH';
} else if (prompt1 == 'TIMESTAMP WITH TIME ZONE') {
    sql = sql + ' WITH TIME ZONE';
} else if (prompt1 == 'TIMESTAMP WITH LOCAL TIME ZONE') {
    sql = sql + ' WITH LOCAL TIME ZONE';
}
}
sql = sql + ')';
dbutil.execute(sql);
```



The syntax for adding columns in SQL Worksheet is as follows ...

```
alter table <table_name>  
add <column_name> datatype(size) not null
```

Any number of columns can be added in the statement, in this example the car_details table gets another three ...

```
alter table car_details  
add cd_mot_due date not null -- This table must be empty  
add cd_insurance date  
add cd_road_fund_due date
```



Table Manipulation – Dropping Columns

The drop column option in the pop-up menu will only allow deletion of one column at a time ...

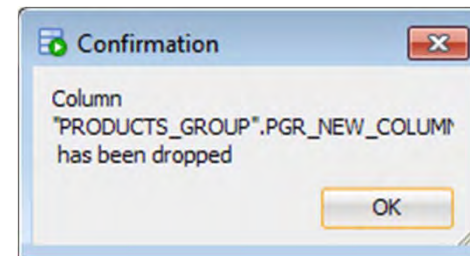
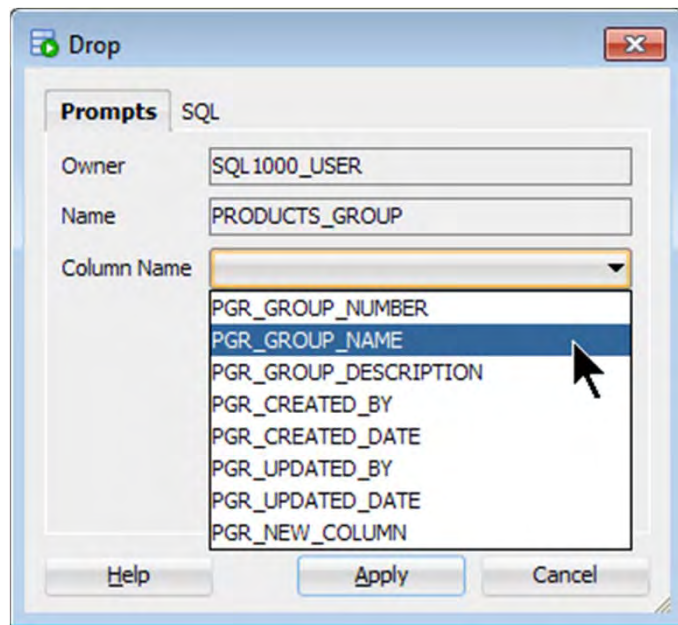
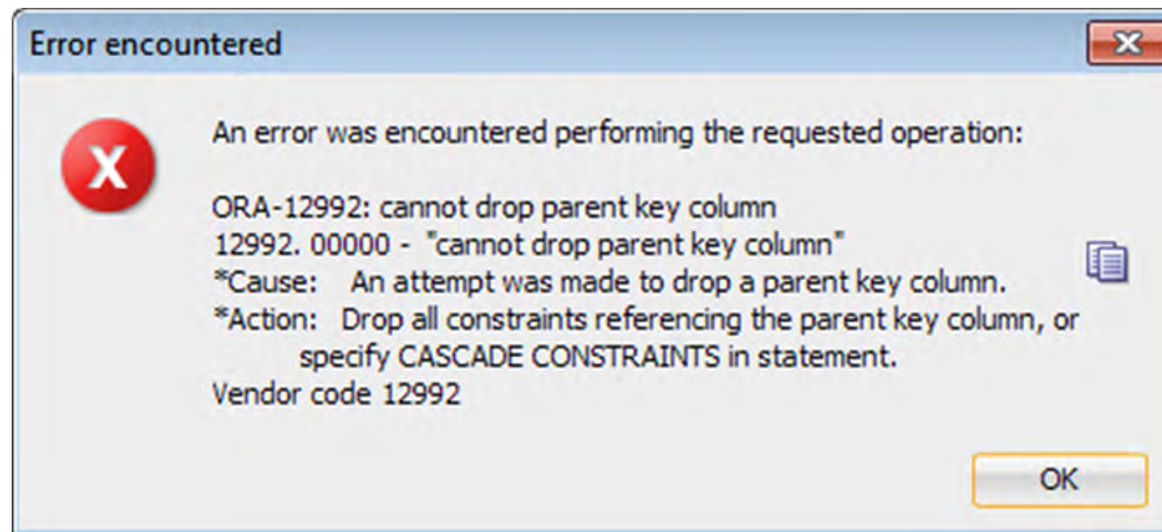


Table Manipulation – ORA-12992: Cannot drop parent key column



Attempting to drop a column which is a parent foreign key produces the following error ...



Primary key columns can be dropped without no errors displayed.

Table Manipulation – Dropping Columns Syntax



The syntax for dropping columns in SQL Worksheet is as follows ...

```
alter table <table_name>
```

```
drop column <column_name>
```

Any number of columns can be dropped in the statement (note the removal of the column keyword) ...

```
alter table products_sales
```

```
drop ( pss_product_number  
      ,pss_number_of_units)
```