



Tree Walking is a technique which involves Tables with a foreign key to a column within itself.

This is called a self-joined Table and is typically found in a Personnel table when a person work for another person within the same Table, or items of Stock making up other items of Stock.

The Tree Walking SQL must be written in the SQL Worksheet, it cannot be created anywhere else in SQL Developer.



Typically the hierarchy will be defined in a table by the use of a foreign key or 'pigs ear', where a column perhaps called Parent ID would have a foreign key to the Primary Key column.

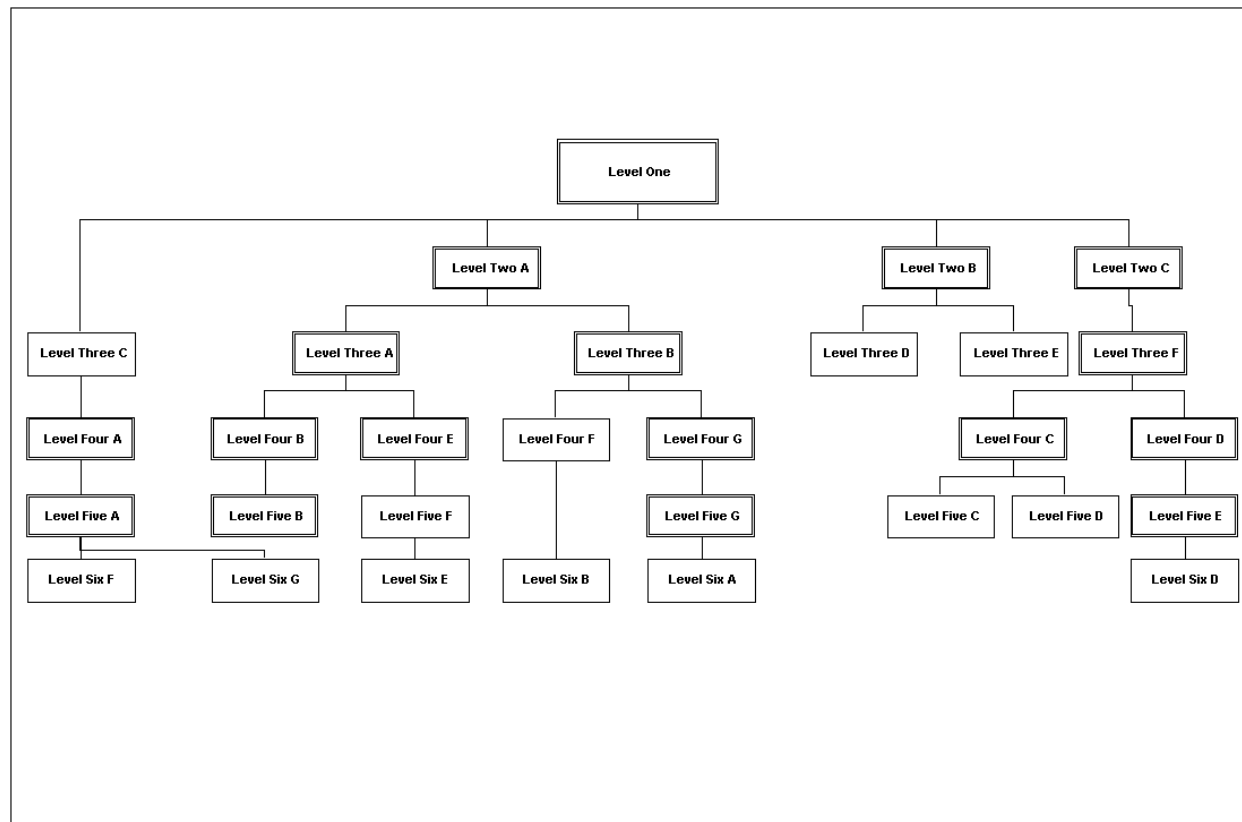
ID	Level	Name	Parent ID
1	One	Level 1	
3	Two	Level 2 A	1
5	Two	Level 2 B	1

Tree walking is the technique of taking the Parent ID and traversing either up or down the hierarchy or 'tree'.



## Tree Walks - Introduction

Tree Walking is the ability to report from within a hierarchy, on either the record's parents or its children.....





```
select <column_name>  
from <table_name>  
start with <column_name> = '<value>'  
connect by prior <primary key column> = <foreign key name>;
```

In the example this is how to work down the tree....

```
start with name = 'LEVEL 1'  
connect by prior ID = Parent_ID;
```

To work up the tree the 'prior' clause is moved to the right ...

```
start with name = 'LEVEL 6A'  
connect by ID = prior Parent_ID;
```