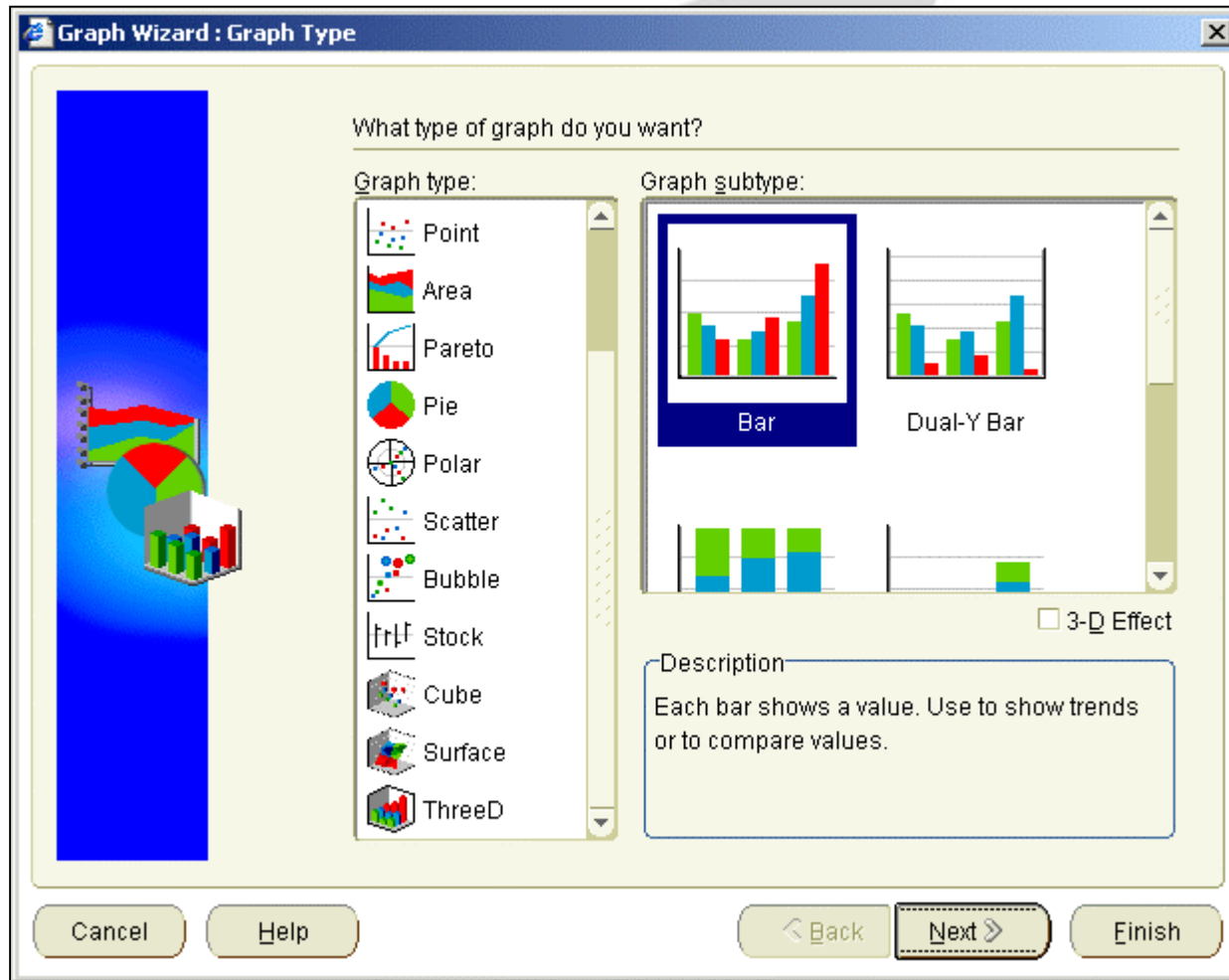


Graphs - Graph Wizard

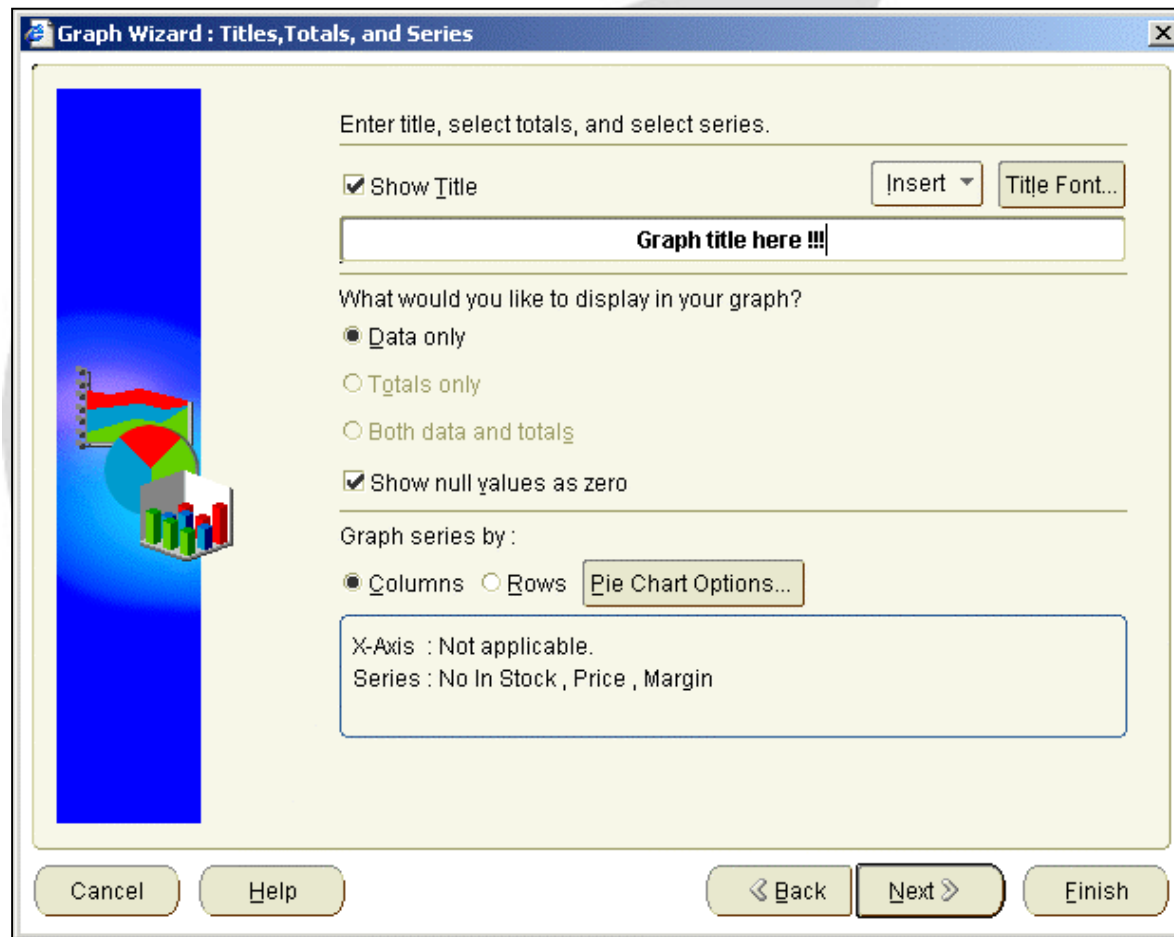


Select the graph type to use and click Next



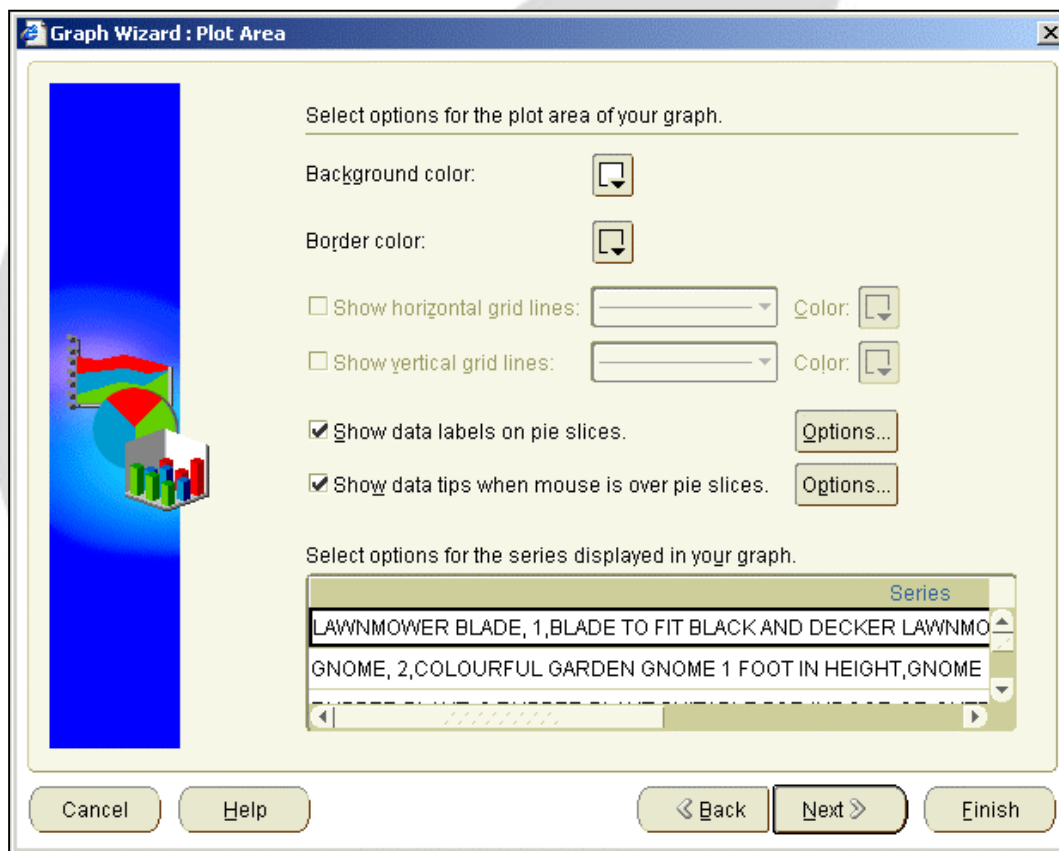


This Dialog allows the input of titles and data selections



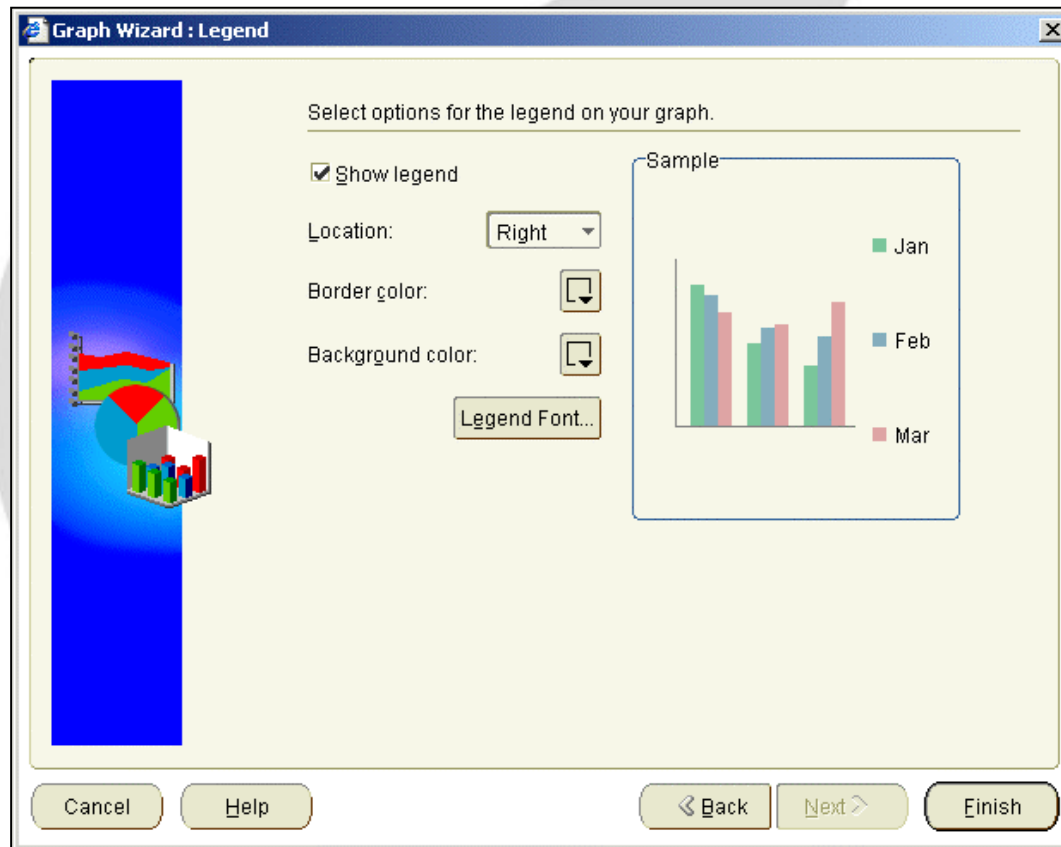


Here the User can select colours and display options





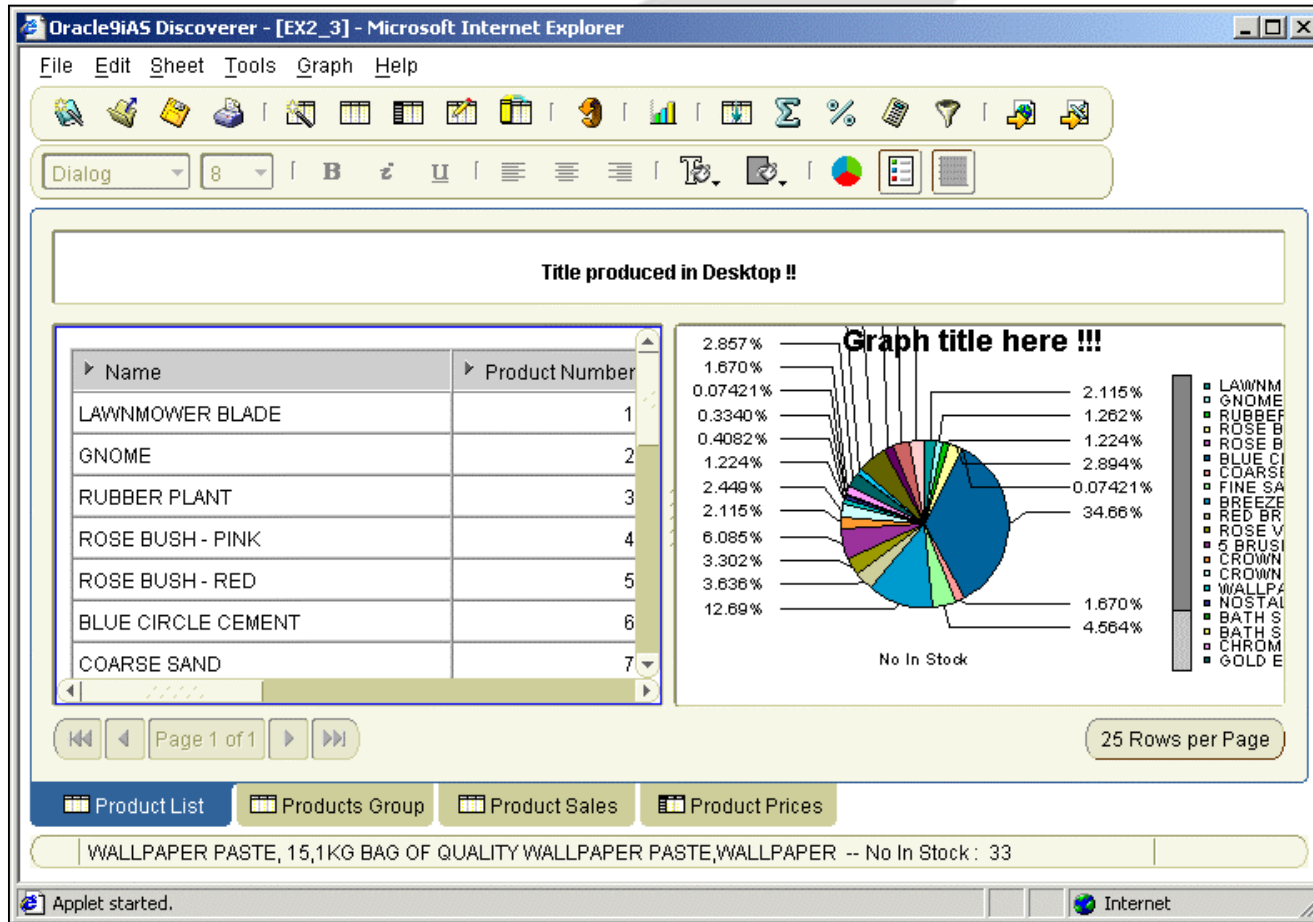
Here the User can select colours and display options for the Legends.



Graphs - Displaying



The graph will be created to the right of the current data within the same browser session





Graphs - Displaying

Once created the Graph options will become available from the Menu

The screenshot shows the Oracle9iAS Discoverer interface in Microsoft Internet Explorer. The 'Graph' menu is open, showing options for displaying the graph. The 'Separate Window' option is selected, with a tooltip that says 'Show the graph in a separate window'. The main area displays a table of products and a pie chart titled 'Graph title here !!!'. The table lists products and their percentages, and the pie chart shows the distribution of these products.

Name	Percentage
LAWNMOWER BLADE	0.4082%
GNOME	1.224%
RUBBER PLANT	2.449%
ROSE BUSH - PINK	2.115%
ROSE BUSH - RED	6.085%
BLUE CIRCLE CEMENT	3.302%
COARSE SAND	3.636%
	12.69%

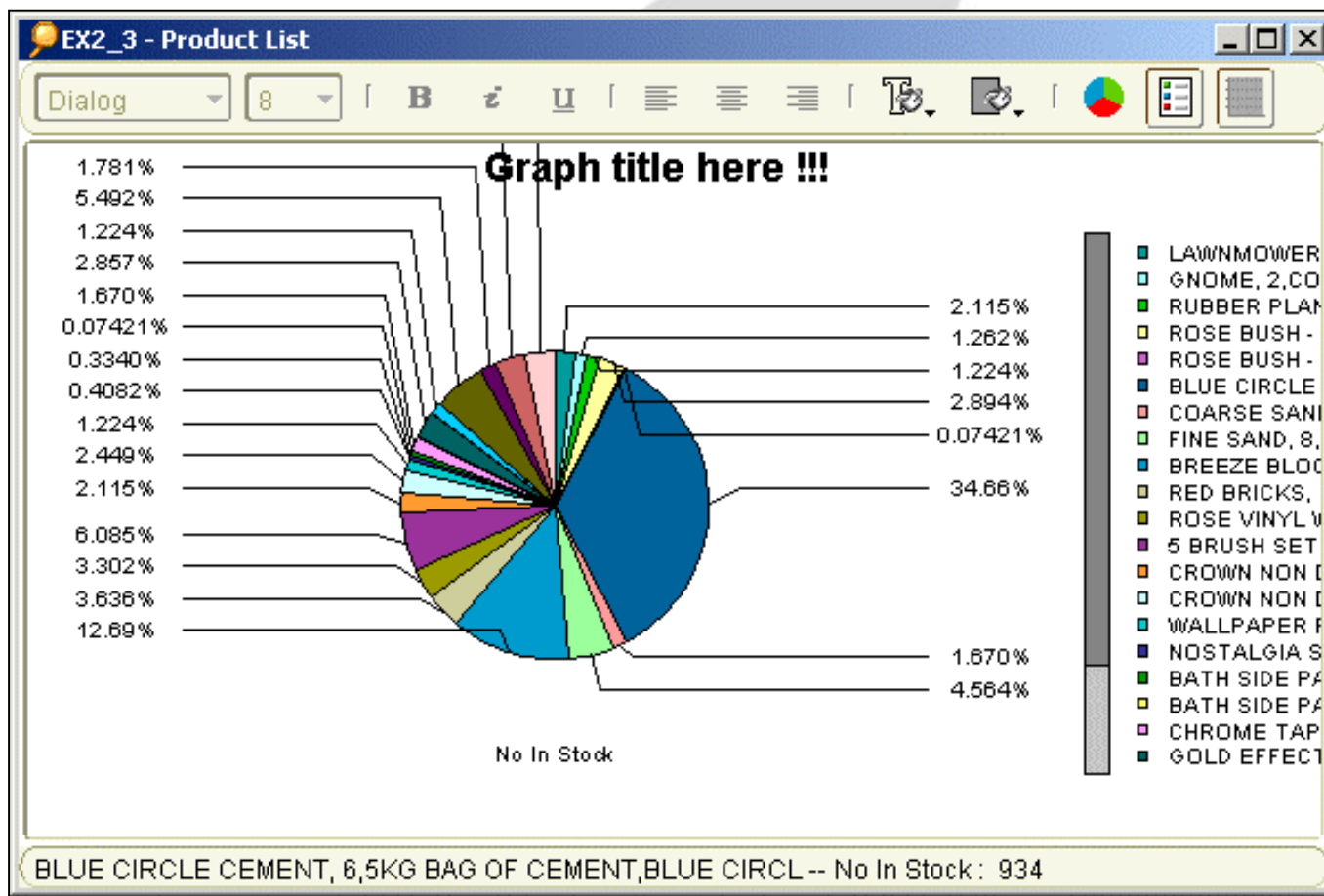
Legend for Pie Chart:

- LAWNMOWER BLADE: 2.115%
- GNOME: 1.262%
- RUBBER PLANT: 1.224%
- ROSE BUSH - PINK: 2.894%
- ROSE BUSH - RED: 0.07421%
- BLUE CIRCLE CEMENT: 34.66%
- COARSE SAND: 1.670%
- FINE SAND: 4.564%
- BREEZE: No In Stock
- RED BRUSH: 12.69%
- ROSE VINE: 0.4082%
- 6 BRUSH: 1.224%
- CROWN: 2.449%
- CROWN: 3.302%
- WALL PAPER: 3.636%
- NOSTALGIC: 1.262%
- BATH SOAP: 2.115%
- BATH SOAP: 1.224%
- CHROME: 2.894%
- GOLDEN: 0.07421%

Graphs - Displaying



In this example the User has decided to display the graph in a separate window ..





Graphs - Displaying

And in this the graph is displayed at the top of the data and is being re-sized ..

The image displays two screenshots of the Oracle9iAS Discoverer web application interface, showing how a graph is displayed and re-sized.

Left Screenshot: Shows a data table with percentages and a small pie chart. The data table lists percentages: 2.857%, 1.670%, 0.07421%, 0.3340%, 0.4082%, 1.224%, 2.449%, 2.115%, 6.085%, 3.302%, 3.636%, and 12.69%.

Right Screenshot: Shows a larger pie chart titled "Graph title here !!!" with a table of data below it. The data table lists percentages: 2.857%, 1.670%, 0.07421%, 0.3340%, 0.4082%, 1.224%, 2.449%, 2.115%, 6.085%, 3.302%, 3.636%, and 12.69%. The pie chart is titled "Title produced in Desktop !!".

The interface includes a menu bar (File, Edit, Sheet, Tools, Graph, Help), a toolbar, and a status bar (Applet started, Internet).



To remove the graph from display either open it in a separate window or delete it ...

