

Exercise Sixteen

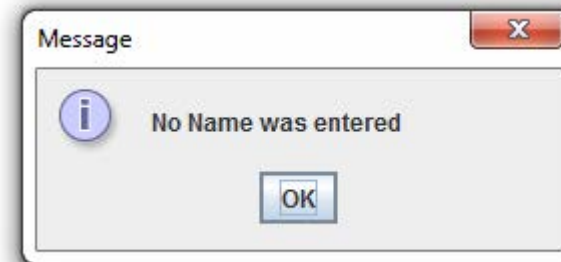
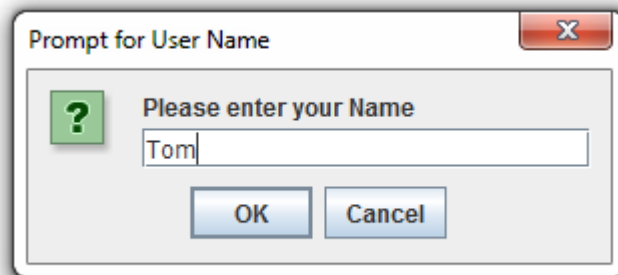


16.2 Copy ex16_1 to ex16_2.

Display an Input dialog asking the user for their name

Display a second dialog confirming that the value they entered is correct.

If a name hasn't been entered display a message dialog informing the user of such.



Exercise Sixteen

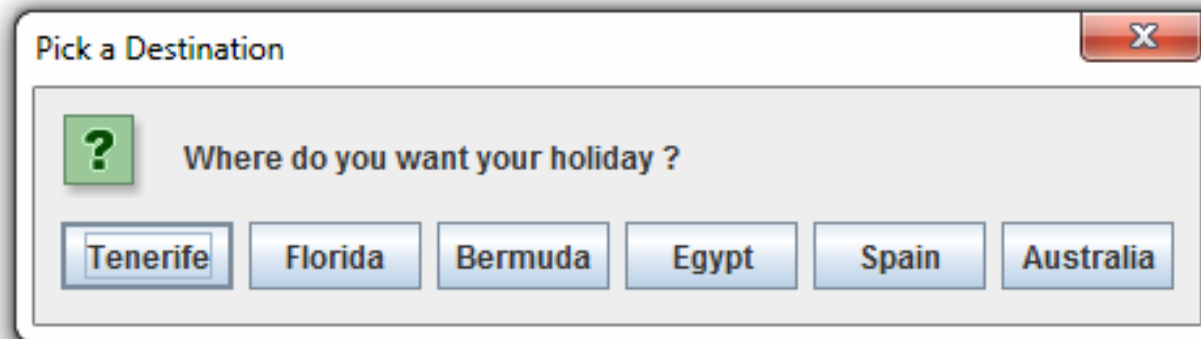


16.3 Copy ex16_2 to ex16_3.

Amend ex16_3 to loop the processing until the user has entered a name, display the previous messages but return to the input dialog until a name has been entered.

16.4 Copy ex16_3 to ex16_4. Remove the current processing.

Create an Option Dialog which asks the user to choose from the following six holiday destinations ... Tenerife, Florida, Bermuda, Egypt, Spain or Australia.



Destination selected was Tenerife