

Exercise Five



5.1 Create a module with a hierarchical tree item simply listing all Stock in the Stock Information table, users selecting a node will then display all relevant sales information in the Stock Sales table.

Before any nodes are selected please display the Seer Logo square.jpg image found in the C:\course folder.

Use the Data Query approach to populating your tree.

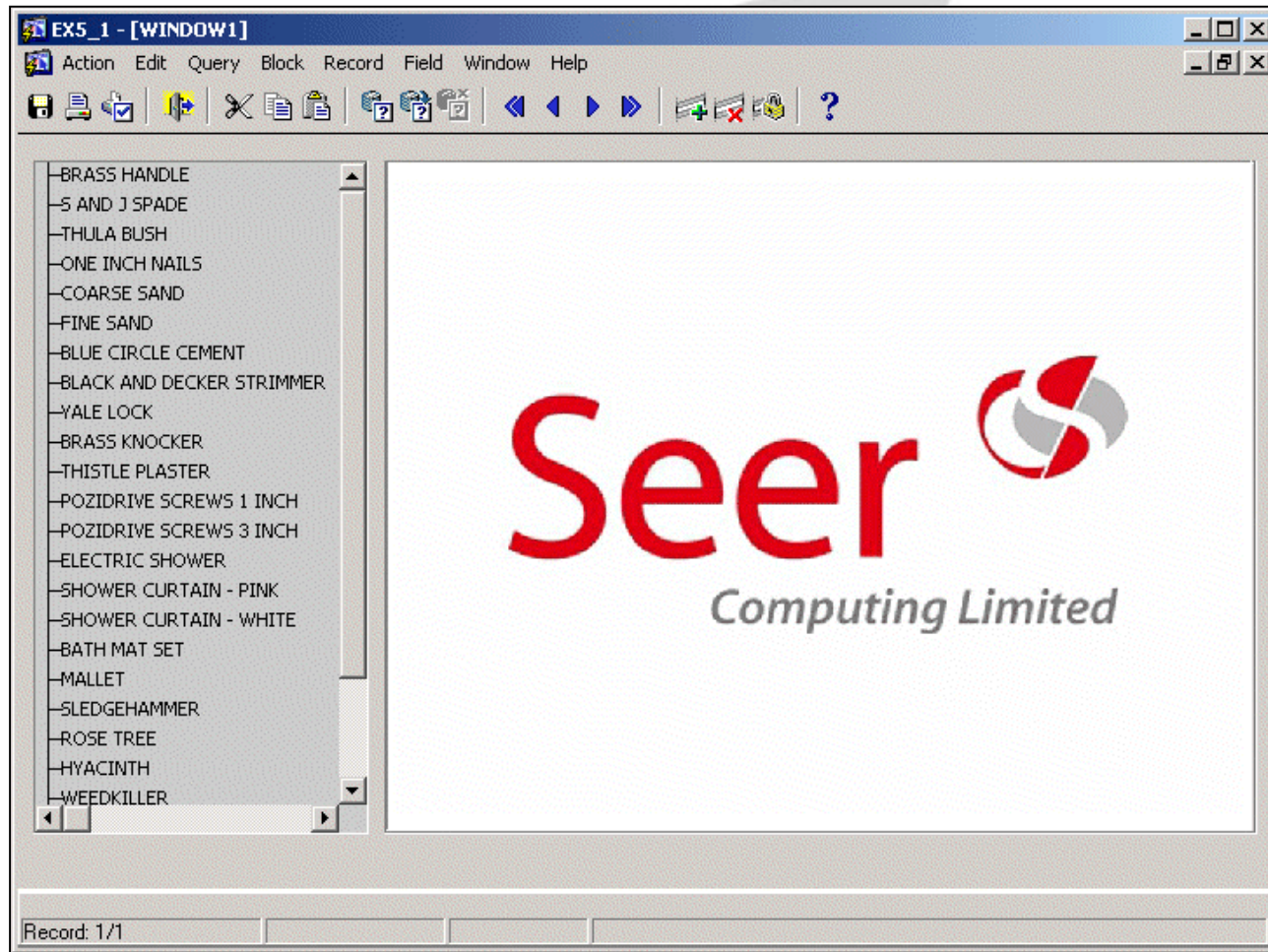
Make the Stock Sales block Query Only.

Save the module as c:\course\ex5_1.

Exercise Five



5.1 continued





5.1 continued

EX5_1 - [WINDOW1]

Action Edit Query Block Record Field Window Help

BRASS HANDLE
S AND J SPADE
THULA BUSH
ONE INCH NAILS
COARSE SAND
FINE SAND
BLUE CIRCLE CEMENT
BLACK AND DECKER STRIMMER
VALE LOCK
BRASS KNOCKER
THISTLE PLASTER
POZIDRIVE SCREWS 1 INCH
POZIDRIVE SCREWS 3 INCH
ELECTRIC SHOWER
SHOWER CURTAIN - PINK
SHOWER CURTAIN - WHITE
BATH MAT SET
MALLET
SLEDGEHAMMER
ROSE TREE
HYACINTH
WEEDKILLER

Date	Location Id	Number Sold	Price	Total
23-MAR-2002	3	2.00	9.99	19.98
13-OCT-2001	8	6.00	9.99	59.94
07-APR-2001	72	4.00	9.99	39.96

Record: 1/3

Exercise Five



5.2 Create a module with a hierarchical tree item listing all Stores and their parents, users selecting a node will then display all relevant store details from the Store Locations table.

Before any nodes are selected please display the Seer Logo square.jpg image found in the C:\course folder.

Use the Record Group approach to populating your tree.

Make the Store Locations block Query Only.

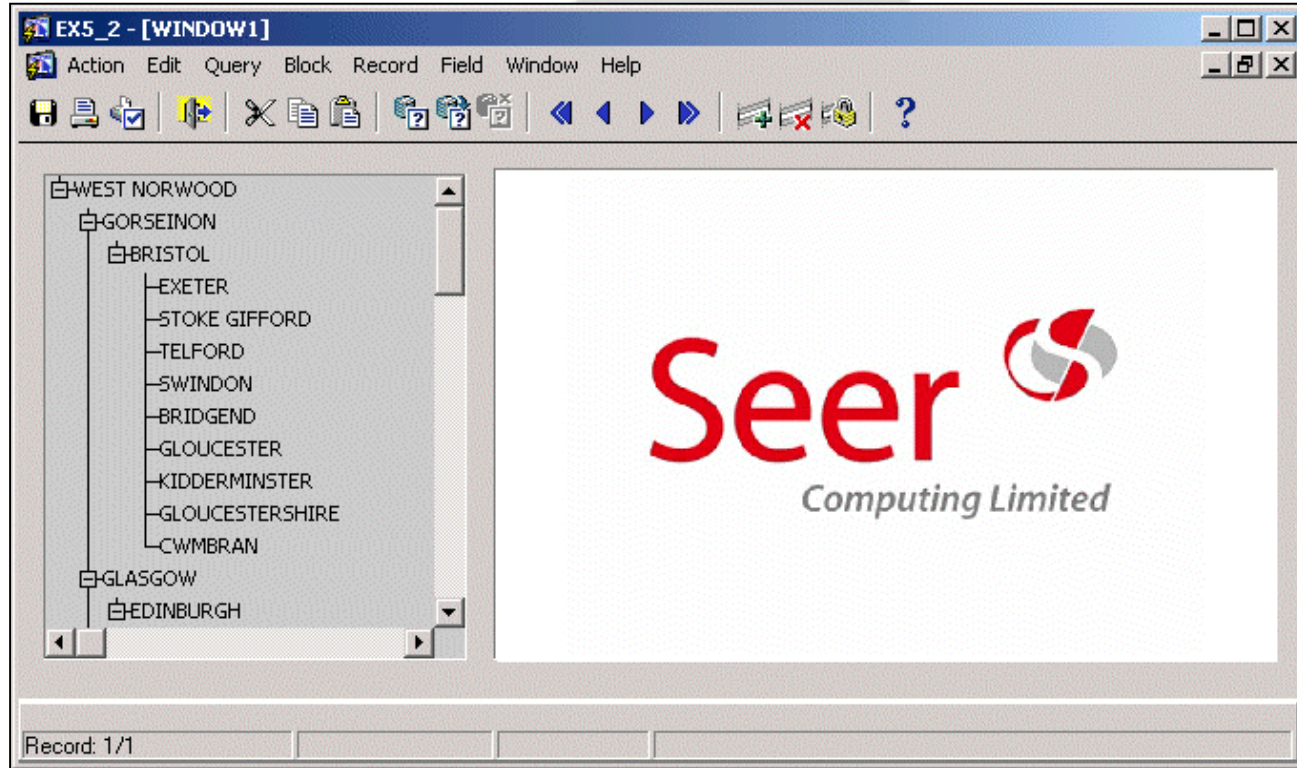
Populate the Location Type description with values from the Location_Type table.

Save the module as c:\course\ex5_2.

Exercise Five



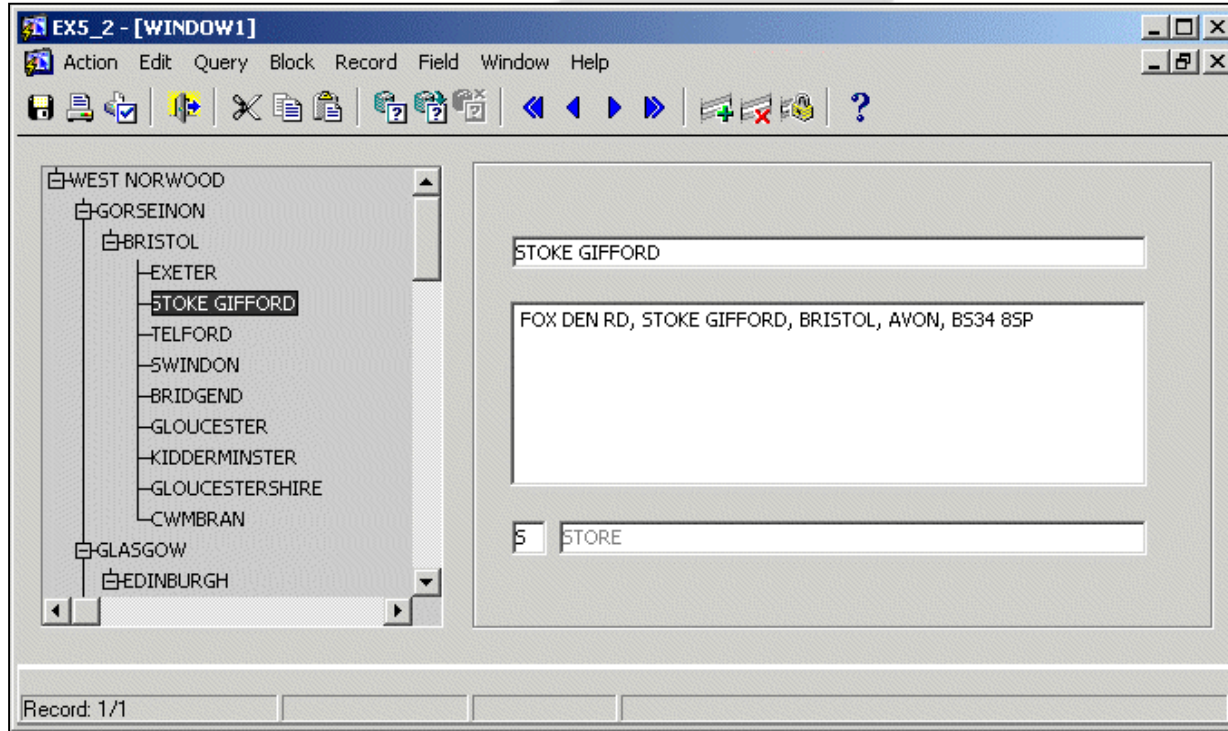
5.2 continued



Exercise Five



5.2 continued



Exercise Five



5.3 If there is sufficient time, convert ex5_1 to use Record Groups and convert ex5_2 to use Data Query. Save the module as c:\course\ex5_3 and c:\course\ex5_4.

